

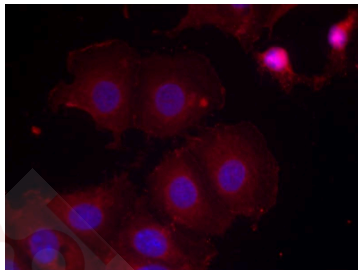
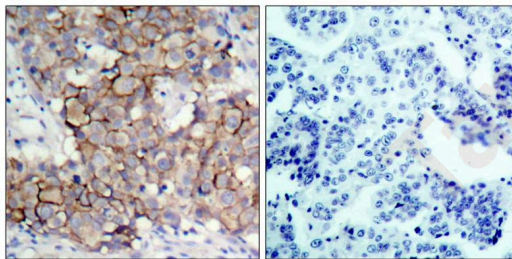
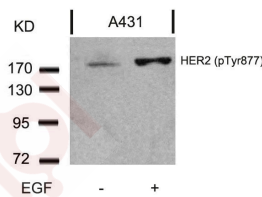
Anti-Phospho-HER2/ERBB2 (Tyr877) Polyclonal Antibody 2

Product Details

Ig Type:	IgG
Reactivity:	Human,Mouse,Rat
Conjugation:	Unconjugated
Purification:	Antibodies were produced by immunizing rabbits with synthetic phosphopeptide and KLH conjugates. Antibodies were purified by affinity-chromatography using epitope-specific phosphopeptide. Non-phospho specific antibodies were removed by chromatography using non-phosphopeptide.

Applications

- Verified Activity:
1. Western blot analysis of extracts from A431 cells untreated or treated with EGF using HER2 (Phospho-Tyr877) Antibody TMAC-01808.
 2. Immunohistochemical analysis of paraffin-embedded human breast carcinoma tissue, using HER2 (Phospho-Tyr877) Antibody TMAC-01808(left) or the same antibody preincubated with blocking peptide (right).
 3. Immunofluorescence staining of methanol-fixed MCF7 cells using HER2 (Phospho-Tyr877) Antibody TMAC-01808.



Application: IF,IHC,WB

A DRUG SCREENING EXPERT

Properties

Stability & Storage: Store at 2°C-8°C for 1 month. Store at -20°C or -80°C for 12 months. Avoid repeated freeze-thaw cycles.

Shipping: Shipping with blue ice.

Antigen Details

Immunogen: Peptide sequence around phosphorylation site of tyrosine 877 (T-E-Y(p)-H-A) derived from Human HER2

Antigen Species: Human

Uniprot ID: P04626

Synonyms: HER2/ERBB2 (p-Tyr877);p-HER2/ERBB2 (Y877);HER2/ERBB2 (p-Y877);p-HER2/ERBB2 (Tyr877)

Research Background

Essential component of a neuregulin-receptor complex, although neuregulins do not interact with it alone. GP30 is a potential ligand for this receptor. Not activated by EGF, TGF- α and amphiregulin.

Inhibitor · Natural Compounds · Compound Libraries · Recombinant Proteins

This product is for Research Use Only · Not for Human or Veterinary or Therapeutic Use

Tel:781-999-4286 E_mail:info@targetmol.com Address:34 Washington Street,Wellesley Hills,MA 02481