

Anti-Phospho-HER2/ERBB2 (Tyr1221, 1222) Polyclonal Antibody 3

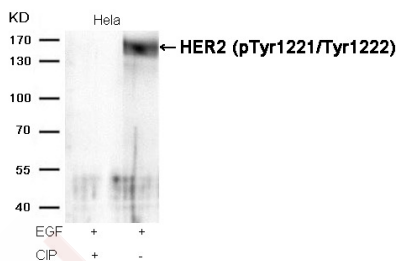
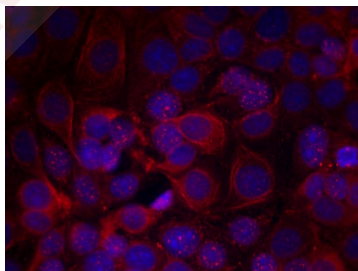
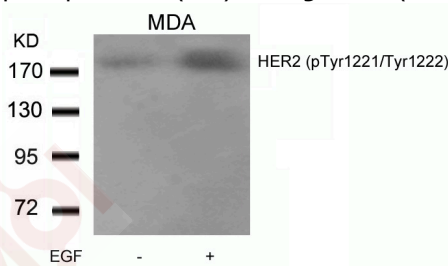
Product Details

Ig Type:	IgG
Reactivity:	Human
Conjugation:	Unconjugated
Purification:	Antibodies were produced by immunizing rabbits with synthetic phosphopeptide and KLH conjugates. Antibodies were purified by affinity-chromatography using epitope-specific phosphopeptide. Non-phospho specific antibodies were removed by chromatography using non-phosphopeptide.

Applications

Verified Activity:

1. Western blot analysis of extracts from MDA cells untreated or treated with EGF using HER2 (Phospho-Tyr1221/Tyr1222) Antibody TMAC-01806.
2. Immunofluorescence staining of methanol-fixed MCF cells using HER2 (Phospho-Tyr1221/Tyr1222) Antibody TMAC-01806.
3. Western blot analysis of extracts from HeLa cells, treated with EGF or calf intestinal phosphatase (CIP), using HER2 (Phospho-Tyr1221/Tyr1222) Antibody TMAC-01806.



Application: IF, WB

A DRUG SCREENING EXPERT

Properties

Stability & Storage: Store at -20°C or -80°C for 12 months. Avoid repeated freeze-thaw cycles.

Shipping: Shipping with blue ice.

Antigen Details

Immunogen: Peptide sequence around phosphorylation site of tyrosine1221/1222 (N-L-Y(p)-Y(p)-W) derived from Human HER2

Antigen Species: Human

Uniprot ID: P04626

Synonyms: p-HER2/ERBB2 (Tyr1221, 1222);HER2/ERBB2 (p-Tyr1221, 1222);p-HER2/ERBB2 (Y1221, 1222); HER2/ERBB2 (p-Y1221, 1222)

Research Background

Essential component of a neuregulin-receptor complex, although neuregulins do not interact with it alone. GP30 is a potential ligand for this receptor. Not activated by EGF, TGF- α and amphiregulin.

Inhibitor · Natural Compounds · Compound Libraries · Recombinant Proteins

This product is for Research Use Only · Not for Human or Veterinary or Therapeutic Use

Tel:781-999-4286 E_mail:info@targetmol.com Address:34 Washington Street,Wellesley Hills,MA 02481