

Anti-HER2/ERBB2 Antibody (8K444)

Product Details

Ig Type:	IgG2a, Kappa
Reactivity:	Human
Conjugation:	Unconjugated
Molecular Weight:	Theoretical: 137 kDa.
Clone:	8K444
Purification:	The antibody was affinity-purified from mouse ascites by affinity-chromatography using specific immunogen.

Applications

Verified Activity:

1. Whole cell lysates were separated by 10% SDS-PAGE, and the membrane was blotted with anti-Her-2(ABT088) antibody. The HRP-conjugated Goat anti-Mouse IgG(H + L) antibody was used to detect the antibody. Lane 1: MCF7, Predicted band size: 137kDa, Observed band size: 200kDa.

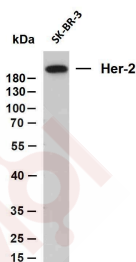
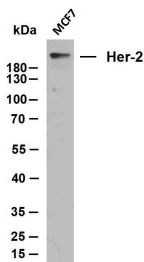
2. Whole cell lysates were separated by 10% SDS-PAGE, and the membrane was blotted with anti-Her-2(ABT088) antibody. The HRP-conjugated Goat anti-Mouse IgG(H + L) antibody was used to detect the antibody. Lane 1: SK-BR-3, Predicted band size: 137kDa, Observed band size: 200kDa.

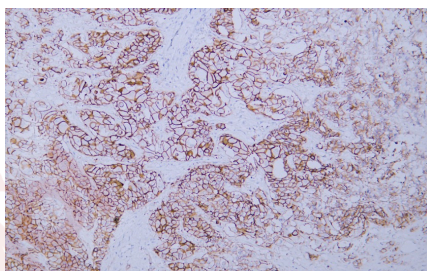
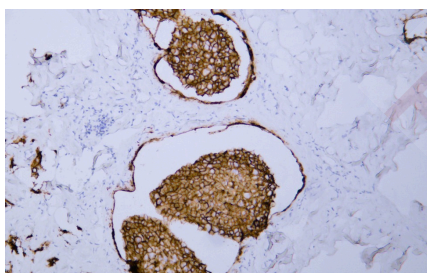
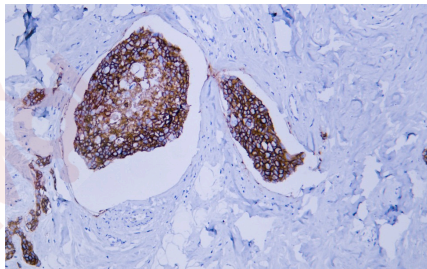
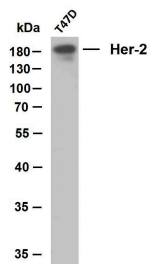
3. Whole cell lysates were separated by 10% SDS-PAGE, and the membrane was blotted with anti-Her-2(ABT008) antibody. The HRP-conjugated Goat anti-Mouse IgG(H + L) antibody was used to detect the antibody. Lane 1: T47D, Predicted band size: 137kDa, Observed band size: 180kDa.

4. Human breast carcinoma tissue was stained with Anti-Her-2 (ABT008) Antibody.

5. Human breast carcinoma tissue was stained with Anti-Her-2 (ABT008) Antibody.

6. Human metastatic hepatocellular carcinoma of the breast tissue was stained with Anti-Her-2 (ABT008) Antibody.





Application: IF,IHC,WB

Recommended IHC: 1:100-500 IF: 1:100-500 WB: 1:500-2000

Properties

Stability & Storage: Store at -20°C or -80°C for 12 months. Avoid repeated freeze-thaw cycles.

Shipping: Shipping with blue ice.

Antigen Details

Immunogen: A synthesized peptide: human Her-2

Antigen Species: Human

Gene ID: 2064

Uniprot ID: P04626

Synonyms: HER-2;TKR1;NEU;HERV7Q;ERVWE1;ENV;HER2;ENVW;EGFR2;ERBB2;herstatin;MLN19;CD340;MLN19;NGL;HERVW

Research Background

This gene encodes a member of the epidermal growth factor (EGF) receptor family of receptor tyrosine kinases. This

A DRUG SCREENING EXPERT

protein has no ligand binding domain of its own and therefore cannot bind growth factors. However, it does bind tightly to other ligand-bound EGF receptor family members to form a heterodimer, stabilizing ligand binding and enhancing kinase-mediated activation of downstream signalling pathways, such as those involving mitogen-activated protein kinase and phosphatidylinositol-3 kinase. Allelic variations at amino acid positions 654 and 655 of isoform a (positions 624 and 625 of isoform b) have been reported, with the most common allele, Ile654/Ile655, shown here. Amplification and/or overexpression of this gene has been reported in numerous cancers, including breast and ovarian tumors.

Inhibitor · Natural Compounds · Compound Libraries · Recombinant Proteins

This product is for Research Use Only · Not for Human or Veterinary or Therapeutic Use

Tel: 781-999-4286 E_mail: info@targetmol.com Address: 34 Washington Street, Wellesley Hills, MA 02481