

## Anti-WFDC2 Antibody (4W741)

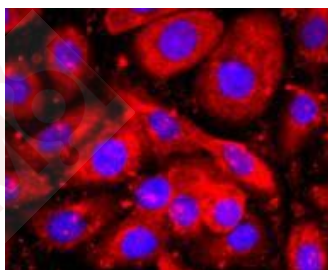
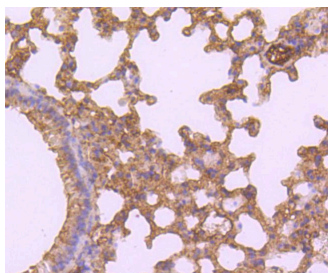
### Product Details

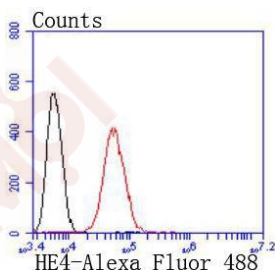
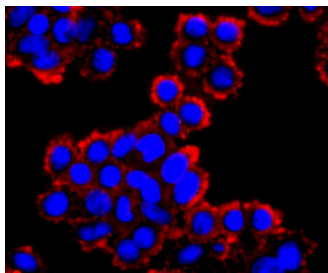
Ig Type:	IgG
Reactivity:	Human,Mouse
Conjugation:	Unconjugated
Molecular Weight:	Theoretical: 23 kDa.
Clone:	4W741
Purification:	ProA affinity purified

### Applications

#### Verified Activity:

1. Western blot analysis of HE4 on different lysates using anti-HE4 antibody at 1/1,000 dilution. Positive control: Lane 1: SW480, Lane 2: SKOV-3.
2. Immunohistochemical analysis of paraffin-embedded mouse lung tissue using anti-HE4 antibody. Counter stained with hematoxylin.
3. ICC staining HE4 in SKOV-3 cells (red). The nuclear counter stain is DAPI (blue). Cells were fixed in paraformaldehyde, permeabilised with 0.25% Triton X100/PBS.
4. ICC staining HE4 in SW480 cells (red). The nuclear counter stain is DAPI (blue). Cells were fixed in paraformaldehyde, permeabilised with 0.25% Triton X100/PBS.
5. Flow cytometric analysis of SW480 cells with HE4 antibody at 1/50 dilution (red) compared with an unlabelled control (cells without incubation with primary antibody; black). Alexa Fluor 488-conjugated goat anti rabbit IgG was used as the secondary antibody.





Application: FCM,ICC/IF,IHC,IP,WB

Recommended WB: 1:1000-2000; IHC: 1:50-200; ICC/IF: 1:50-200; FCM: 1:50-100

### Properties

Stability & Storage: Store at -20°C or -80°C for 12 months. Avoid repeated freeze-thaw cycles.

Shipping: Shipping with blue ice.

### Antigen Details

Immunogen: Recombinant Protein

Uniprot ID: Q14508

Synonyms: Major epididymis-specific protein E4;WAP four-disulfide core domain protein 2;Epididymal secretory protein E4;Putative protease inhibitor WAP5

### Research Background

HE4 (whey acidic protein (WAP)-type four-disulfide core-2, WFDC2) is a small secretory protein that may influence sperm maturation. HE4 gene expression is high in pulmonary epithelial cells and in some ovarian cancers. HE4 protein has a WAP motif that contains eight cysteines forming four disulfide bonds at the core of the protein. The WAP motif functions as a protease inhibitor in many of the family members that contain them.

**Inhibitor · Natural Compounds · Compound Libraries · Recombinant Proteins**

This product is for Research Use Only · Not for Human or Veterinary or Therapeutic Use

Tel:781-999-4286 E\_mail:info@targetmol.com Address:34 Washington Street,Wellesley Hills,MA 02481