

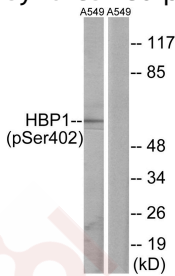
## Anti-Phospho-HBP1 (Ser402) Polyclonal Antibody

### Product Details

Ig Type:	IgG
Reactivity:	Human,Mouse
Conjugation:	Unconjugated
Molecular Weight:	Actual: 58 kDa.
Purification:	Antibodies were produced by immunizing rabbits with synthetic phosphopeptide and KLH conjugates. Antibodies were purified by affinity-chromatography using epitope-specific phosphopeptide. Non-phospho specific antibodies were removed by chromatography using non-phosphopeptide.

### Applications

Verified Activity: 1. Western blot analysis of extracts from A549 cells, treated with PMA (125ng/ml, 30mins), using HBP1 (Phospho-Ser402) antibody TMAC-01765. The lane on the right is treated with the synthesized peptide.



Application:	WB
Recommended	WB: 1:500-3000

### Properties

Stability & Storage:	Store at -20°C or -80°C for 12 months. Avoid repeated freeze-thaw cycles.
Shipping:	Shipping with blue ice.

### Antigen Details

Immunogen:	Peptide sequence around phosphorylation site of serine 402 (C-G-S(p)-P-G) derived from Human HBP1
Antigen Species:	Human
Uniprot ID:	O60381
Synonyms:	p-HBP1 (S402);HBP1 (p-S402);p-HBP1 (Ser402);HBP1 (p-Ser402)

### Research Background

Transcriptional repressor that binds to the promoter region of target genes. Plays a role in the regulation of the cell cycle and of the Wnt pathway. Binds preferentially to the sequence 5'-TTCATTCATTCA-3'. Binding to the H1FO promoter is enhanced by interaction with RB1. Disrupts the interaction between DNA and TCF4.

**Inhibitor · Natural Compounds · Compound Libraries · Recombinant Proteins**

This product is for Research Use Only · Not for Human or Veterinary or Therapeutic Use

Tel:781-999-4286 E\_mail:info@targetmol.com Address:34 Washington Street,Wellesley Hills,MA 02481