

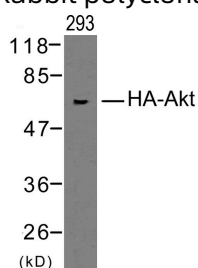
## Anti-HA Tag Polyclonal Antibody 3

## Product Details

Ig Type:	IgG
Conjugation:	Unconjugated
Purification:	Antibodies were produced by immunizing rabbits with synthetic peptide and KLH conjugates. Antibodies were purified by affinity-chromatography using epitope-specific peptide.

## Applications

Verified Activity: 1. Western blot analysis of extracts from 293 cells transfected with HA-tagged Akt using HA-Tag Rabbit polyclonal antibody TMAC-01763.



Application: WB

## Properties

Stability & Storage: Store at 2°C-8°C for 1 month. Store at -20°C or -80°C for 12 months. Avoid repeated freeze-thaw cycles.

Shipping: Shipping with blue ice.

## Antigen Details

Immunogen: Peptide sequence (Y-P-Y-D-V-P-D-Y-A)

Synonyms: HA1;HA epitope tag;hemagglutinin;HA-tag;HA2;Hemagglutinin HA1 chain;Hemagglutinin HA2

## Research Background

Epitope tags are artificial epitopes useful for the labeling and detection of proteins. Epitope tags - short amino acid sequences are 'fused' to the N- or C-terminus of the protein.

**Inhibitor · Natural Compounds · Compound Libraries · Recombinant Proteins**

This product is for Research Use Only. Not for Human or Veterinary or Therapeutic Use

Tel:781-999-4286 E\_mail:info@targetmol.com Address:34 Washington Street,Wellesley Hills,MA 02481