

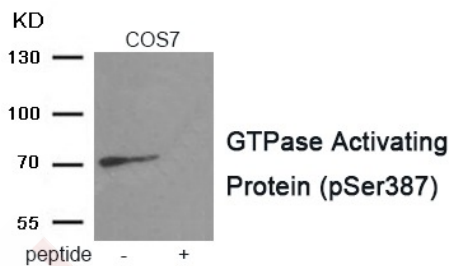
## Anti-Phospho-GTPase Activating Protein (Ser387) Polyclonal Antibody

### Product Details

Ig Type:	IgG
Reactivity:	Human,Mouse
Conjugation:	Unconjugated
Molecular Weight:	Actual: 72 kDa.
Purification:	Antibodies were produced by immunizing rabbits with synthetic phosphopeptide and KLH conjugates. Antibodies were purified by affinity-chromatography using epitope-specific phosphopeptide. Non-phospho specific antibodies were removed by chromatography using non-phosphopeptide.

### Applications

Verified Activity: 1. Western blot analysis of extracts from COS7 tissue using GTPase Activating Protein antibody TMAC-01746. The lane on the right is treated with the antigen-specific peptide.



Application:	WB
Recommended	WB: 1:500-1000

### Properties

Stability & Storage:	Store at -20°C or -80°C for 12 months. Avoid repeated freeze-thaw cycles.
Shipping:	Shipping with blue ice.

### Antigen Details

Immunogen:	Peptide sequence around phosphorylation site of serine 387 (R-I-S(p)-G-C) derived from Human GTPase Activating Protein
Antigen Species:	human
Uniprot ID:	Q9H0H5
Synonyms:	GTPase Activating Protein (p-S387);p-GTPase Activating Protein (S387);p-GTPase Activating Protein (Ser387);GTPase Activating Protein (p-Ser387)

### Research Background

Component of the centralspindlin complex that serves as a microtubule-dependent and Rho-mediated signaling required for the myosin contractile ring formation during the cell cycle cytokinesis. Required for proper attachment of the midbody to the cell membrane during cytokinesis. Plays key roles in controlling cell growth and differentiation of hematopoietic cells through mechanisms other than regulating Rac GTPase activity. Also involved in the regulation of growth-related processes in adipocytes and myoblasts. May be involved in regulating

spermatogenesis and in the RACGAP1 pathway in neuronal proliferation.

**Inhibitor · Natural Compounds · Compound Libraries · Recombinant Proteins**

This product is for Research Use Only · Not for Human or Veterinary or Therapeutic Use

Tel:781-999-4286 E\_mail:info@targetmol.com Address:34 Washington Street,Wellesley Hills,MA 02481