

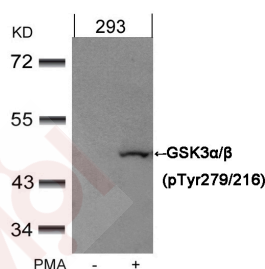
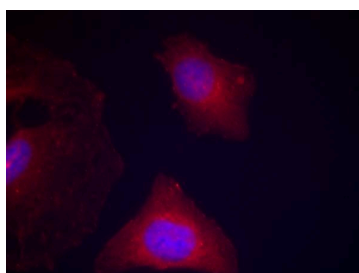
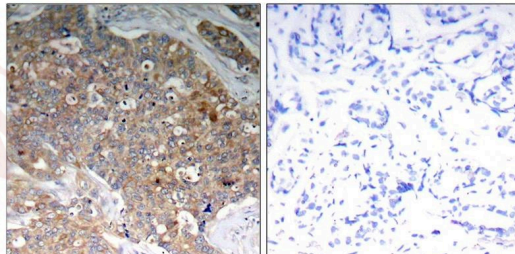
## Anti-Phospho-GSK3A/B (Tyr279, 216) Polyclonal Antibody

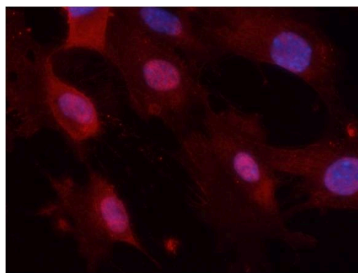
### Product Details

Ig Type:	IgG
Reactivity:	Human,Mouse,Rat
Conjugation:	Unconjugated
Purification:	Antibodies were produced by immunizing rabbits with synthetic phosphopeptide and KLH conjugates. Antibodies were purified by affinity-chromatography using epitope-specific phosphopeptide. Non-phospho specific antibodies were removed by chromatography using non-phosphopeptide.

### Applications

1. Immunohistochemical analysis of paraffin-embedded human breast carcinoma tissue using GSK3 $\alpha/\beta$  (Phospho-Tyr279/216) Antibody TMAC-01731 (left) or the same antibody preincubated with blocking peptide (right).
2. Immunofluorescence staining of methanol-fixed Hela cells using GSK3 $\alpha/\beta$  (Phospho-Tyr279/216) Antibody TMAC-01731.
3. Western blot analysis of extracts from 293 cells untreated or treated with PMA using GSK3 $\alpha/\beta$  (Phospho-Tyr279/216) Antibody TMAC-01731.
4. Immunofluorescence staining of methanol-fixed MEF cells using GSK3 $\alpha/\beta$  (Phospho-Tyr279/216) Antibody TMAC-01731.





Application: ELISA,IF,IHC,WB

### Properties

Stability & Storage: Store at 2°C-8°C for 1 month. Store at -20°C or -80°C for 12 months. Avoid repeated freeze-thaw cycles.

Shipping: Shipping with blue ice.

### Antigen Details

Immunogen: Peptide sequence around phosphorylation site of tyrosine 279/216 (V-S-Y(p)-I-C) derived from Human GSK3 $\alpha$ / $\beta$

Antigen Species: human

Uniprot ID: P49840

Synonyms: GSK3 $\alpha$ ;GSK 3A;GSK-3  $\alpha$ ;GSK3A/GSK3B (p-Tyr216, 279);p-GSK3A/GSK3B (Tyr216, 279); p-GSK3A/GSK3B (Y216, 279);Gsk3a;Glycogen synthase kinase 3  $\alpha$ ;GSK 3  $\alpha$ ; GSK3A/GSK3B (p-Y216, 279);Phospho-GSK3A/GSK3B (Y216, 279);Serine/threonine protein kinase GSK3A;DKFZp686D0638;Glycogen synthase kinase-3  $\alpha$

### Research Background

Participates in the Wnt signaling pathway. Implicated in the hormonal control of several regulatory proteins including glycogen synthase, MYB and the transcription factor JUN. Phosphorylates JUN at sites proximal to its DNA-binding domain, thereby reducing its affinity for DNA. Phosphorylates MUC1 in breast cancer cells, and decreases the interaction of MUC1 with CTNNB1/beta-catenin. Phosphorylates CTNNB1/beta-catenin.

**Inhibitor · Natural Compounds · Compound Libraries · Recombinant Proteins**

This product is for Research Use Only · Not for Human or Veterinary or Therapeutic Use

Tel:781-999-4286 E\_mail:info@targetmol.com Address:34 Washington Street,Wellesley Hills,MA 02481