

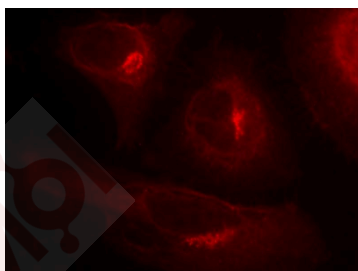
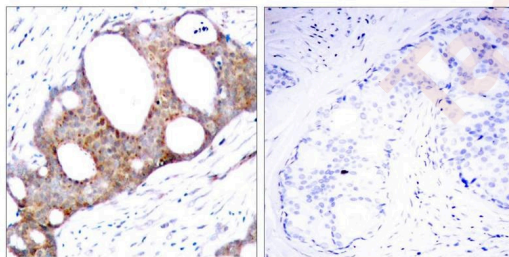
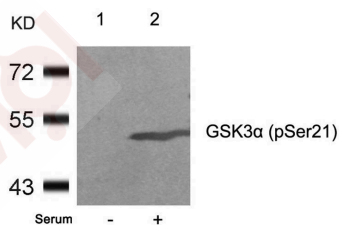
Anti-Phospho-GSK3A (Ser21) Polyclonal Antibody

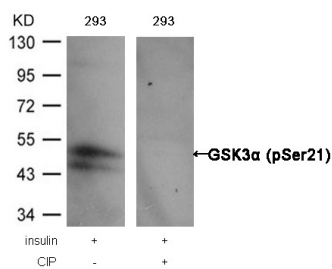
Product Details

Ig Type:	IgG
Reactivity:	Human,Mouse,Rat
Conjugation:	Unconjugated
Purification:	Antibodies were produced by immunizing rabbits with synthetic phosphopeptide and KLH conjugates. Antibodies were purified by affinity-chromatography using epitope-specific phosphopeptide. Non-phospho specific antibodies were removed by chromatography using non-phosphopeptide.

Applications

- Verified Activity:
1. Western blot analysis of extracts from 293 cells untreated (lane 1) or treated with serum (lane 2) using GSK3a (Phospho-Ser21) Antibody TMAC-01730.
 2. Immunohistochemical analysis of paraffin-embedded human breast carcinoma tissue using GSK3a (Phospho-Ser21) Antibody TMAC-01730 (left) or the same antibody preincubated with blocking peptide (right).
 3. Immunofluorescence staining of methanol-fixed Hela cells showing cytoplasmic staining using GSK3a (Phospho-Ser21) Antibody TMAC-01730.
 4. Western blot analysis of extracts from 293 cells, treated with insulin or calf intestinal phosphatase (CIP), using GSK3a (Phospho-Ser21) Antibody TMAC-01730.





Application: IF,IHC,WB

Properties

Stability & Storage: Store at 2°C-8°C for 1 month. Store at -20°C or -80°C for 12 months. Avoid repeated freeze-thaw cycles.

Shipping: Shipping with blue ice.

Antigen Details

Immunogen: Peptide sequence around phosphorylation site of serine 21 (T-S-S(p)-F-A) derived from Human GSK3a

Antigen Species: Human

Uniprot ID: P49840

Synonyms: p-GSK3A (Ser21);p-GSK3A (S21);Serine/threonine protein kinase GSK3A;Glycogen synthase kinase 3 alpha;Glycogen synthase kinase-3 alpha;Gsk3a;GSK3A (p-Ser21);GSK3alpha;GSK 3A; GSK 3 alpha;DKFZp686D0638;GSK3A (p-S21);Phospho-GSK3A (S21);GSK-3 alpha

Research Background

Implicated in the hormonal control of several regulatory proteins including glycogen synthase, MYB and the transcription factor JUN.

Inhibitor · Natural Compounds · Compound Libraries · Recombinant Proteins

This product is for Research Use Only · Not for Human or Veterinary or Therapeutic Use

Tel:781-999-4286 E_mail:info@targetmol.com Address:34 Washington Street,Wellesley Hills,MA 02481