

## Anti-GHR Antibody (1M753)

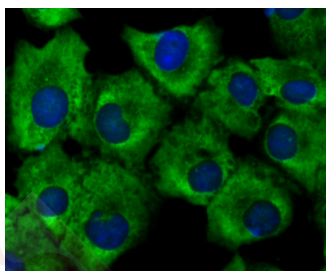
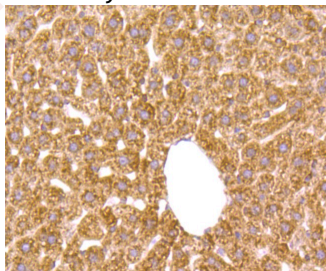
### Product Details

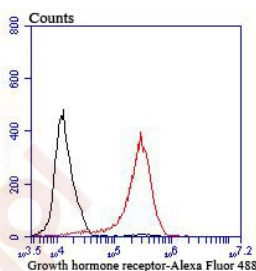
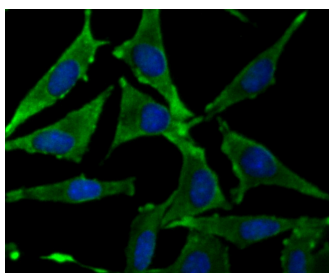
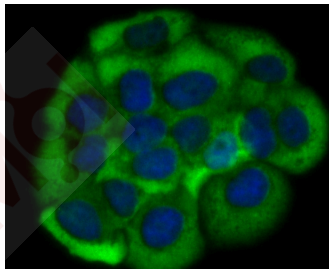
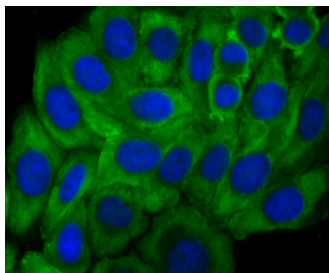
Ig Type:	IgG
Reactivity:	Human,Mouse,Rat
Conjugation:	Unconjugated
Molecular Weight:	Theoretical: 71 kDa.
Clone:	1M753
Purification:	ProA affinity purified

### Applications

#### Verified Activity:

1. Immunohistochemical analysis of paraffin-embedded mouse liver tissue using anti-Growth hormone receptor antibody. Counter stained with hematoxylin.
2. ICC staining Growth hormone receptor in A549 cells (green). The nuclear counter stain is DAPI (blue). Cells were fixed in paraformaldehyde, permeabilised with 0.25% Triton X100/PBS.
3. ICC staining Growth hormone receptor in HepG2 cells (green). The nuclear counter stain is DAPI (blue). Cells were fixed in paraformaldehyde, permeabilised with 0.25% Triton X100/PBS.
4. ICC staining Growth hormone receptor in JAR cells (green). The nuclear counter stain is DAPI (blue). Cells were fixed in paraformaldehyde, permeabilised with 0.25% Triton X100/PBS.
5. ICC staining Growth hormone receptor in SH-SY5Y cells (green). The nuclear counter stain is DAPI (blue). Cells were fixed in paraformaldehyde, permeabilised with 0.25% Triton X100/PBS.
6. Flow cytometric analysis of MCF-7 cells with Growth hormone receptor antibody at 1/100 dilution (red) compared with an unlabelled control (cells without incubation with primary antibody; black). Alexa Fluor 488-conjugated goat anti rabbit IgG was used as the secondary antibody.





Application: FCM,ICC,IHC,WB

Recommended IHC: 1:50-200; ICC: 1:50-200; FCM: 1:50-100

### Properties

Stability & Storage: Store at -20°C or -80°C for 12 months. Avoid repeated freeze-thaw cycles.

Shipping: Shipping with blue ice.

### Antigen Details

Immunogen: Recombinant Protein

Uniprot ID: P10912

Synonyms: GH receptor;GHR/BP;GHBP;GHR

### Research Background

GHR (growth hormone receptor) binds growth hormone (GH), which is produced by the anterior pituitary and regulates body growth and other metabolic processes. GHR is an integral membrane protein and a member of the cytokine receptor family. A common characteristic of the cytokine receptor family is having soluble forms of the protein. The soluble form of GHR is GH-binding protein (GHBP), which is generated by the proteolytic cleavage of the extracellular domain of GHR (2-4). Reduced levels of GHBP are associated with GH insensitivity syndrome (GHIS)

(2,4). GHR has been shown to be transcribed via at least two different promoters, resulting in GHR 1A and GHR 1B. Both GHR 1A and 1B are expressed in liver, whereas GHR 1B is also expressed in muscle, uterus, and ovary tissues.

**Inhibitor · Natural Compounds · Compound Libraries · Recombinant Proteins**

This product is for Research Use Only · Not for Human or Veterinary or Therapeutic Use

Tel:781-999-4286 E\_mail:info@targetmol.com Address:34 Washington Street,Wellesley Hills,MA 02481