

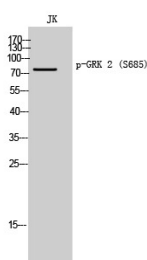
Anti-Phospho-GRK2 (Ser685) Polyclonal Antibody

Product Details

Reactivity:	Human,Mouse,Rat
Conjugation:	Unconjugated
Molecular Weight:	Theoretical: 80 kDa.
Purification:	The antibody was affinity-purified from rabbit antiserum by affinity-chromatography

Applications

Verified Activity: 1. Western Blot analysis of JK cells using Phospho-GRK 2 (S685) Polyclonal Antibody.



Application:	ELISA,WB
Recommended	WB: 1:500-2000; ELISA: 1: 5000

Properties

Stability & Storage:	Store at -20°C or -80°C for 12 months. Avoid repeated freeze-thaw cycles.
Shipping:	Shipping with blue ice.

Antigen Details

Immunogen:	Phospho peptide at Ser685 of GRK2
Uniprot ID:	P25098
Synonyms:	GRK2 (p-Ser685);p-GRK2 (S685);GRK2 (p-S685);p-GRK2 (Ser685)

Inhibitor · Natural Compounds · Compound Libraries · Recombinant Proteins

This product is for Research Use Only. Not for Human or Veterinary or Therapeutic Use

Tel:781-999-4286 E_mail:info@targetmol.com Address:34 Washington Street,Wellesley Hills,MA 02481