

## Anti-GPCR GPR86 Antibody (3M274)

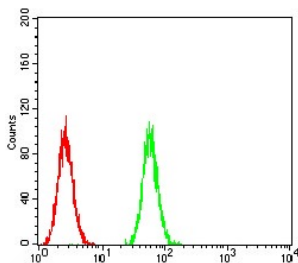
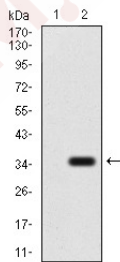
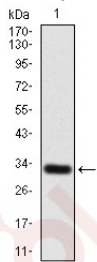
### Product Details

Reactivity:	Human
Conjugation:	Unconjugated
Molecular Weight:	Theoretical: 41 kDa.
Clone:	3M274
Purification:	ProA affinity purified

### Applications

#### Verified Activity:

1. Western blot analysis of GPCR GPR86 on human GPCR GPR86 recombinant protein using anti-GPCR GPR86 antibody at 1/1,000 dilution.
2. Western blot analysis of GPCR GPR86 on HEK293 (1) and GPCR GPR86-hlgGfc transfected HEK293 (2) cell lysate using anti- GPCR GPR86 antibody at 1/1,000 dilution.
3. Flow cytometric analysis of Hela cells with GPCR GPR86 antibody at 1/100 dilution (green) compared with an unlabelled control (cells without incubation with primary antibody; red).



Application:	FCM,WB
Recommended	WB: 1:500-2000; FCM: 1:50-100

### Properties

Stability & Storage: Store at -20°C or -80°C for 12 months. Avoid repeated freeze-thaw cycles.

Shipping: Shipping with blue ice.

---

### Antigen Details

Immunogen: Recombinant Protein

Uniprot ID: Q9BPV8

Synonyms: G protein coupled receptor 94;GPCR1;HGNC:13661;GPR94;Purinergic receptor P2Y G protein coupled 13;FKSG77;P2Y13;G-protein coupled receptor 86;P2Y purinoceptor 13;G-protein coupled receptor 94;SP174;P2RY13;GPR86;G protein coupled receptor 86;P2Y13\_HUMAN

---

### Research Background

The product of this gene belongs to the family of G-protein coupled receptors. This family has several receptor subtypes with different pharmacological selectivity, which overlaps in some cases, for various adenosine and uridine nucleotides. This receptor is activated by ADP.

**Inhibitor · Natural Compounds · Compound Libraries · Recombinant Proteins**

This product is for Research Use Only · Not for Human or Veterinary or Therapeutic Use

Tel:781-999-4286 E\_mail:info@targetmol.com Address:34 Washington Street,Wellesley Hills,MA 02481