

## Anti-Golgin subfamily A member 5 Antibody (2L722)

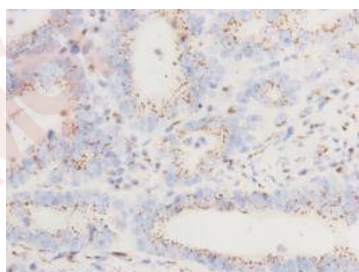
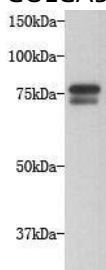
### Product Details

Reactivity:	Human
Conjugation:	Unconjugated
Molecular Weight:	Theoretical: 83 kDa.
Clone:	2L722
Purification:	ProA affinity purified

### Applications

#### Verified Activity:

1. Western blot analysis on Hela cell lysates using anti-GOLGA5 Mouse mAb.
2. Immunohistochemical analysis of paraffin- embedded gastric cancer tissue using anti-GOLGA5 Mouse mAb.



Application:	IHC,WB
Recommended	WB: 1:1000; IHC: 1:100

### Properties

Stability & Storage:	Store at -20°C or -80°C for 12 months. Avoid repeated freeze-thaw cycles.
Shipping:	Shipping with blue ice.

### Antigen Details

Immunogen:	Recombinant Protein
Uniprot ID:	Q8TBA6
Synonyms:	RET fused gene 5 protein;GOLIM5;PTC5;GOLGA 5;Ret II;GOLIM 5;RFG 5;Cell proliferation-inducing gene 31 protein;Golgin subfamily A member 5;Protein Ret-II;Golgin84;Golgi integral membrane protein 5;Golgin A5;Golgin-84;Ret fused gene 5;GOLGA5;Golgi autoantigen golgin subfamily a 5;Ret II protein;Cell proliferation inducing gene 31;GOGA5_HUMAN;Golgin 84;RFG5;RET-fused gene 5 protein

---

### Research Background

Golgin subfamily A member 5(GOLGA5) is a golgi apparatus membrane protein, highly expressed in seminiferous tubules and Leydig cells in testis. It is highly phosphorylated during mitosis. GOLGA5 is involved in maintaining Golgi structure and intra-Golgi retrograde transport. It stimulates the formation of Golgi stacks and ribbons. Defects in GOLGA5 are a cause of thyroid papillary carcinoma (TPC).

**Inhibitor · Natural Compounds · Compound Libraries · Recombinant Proteins**

This product is for Research Use Only· Not for Human or Veterinary or Therapeutic Use

Tel:781-999-4286 E\_mail:info@targetmol.com Address:34 Washington Street,Wellesley Hills,MA 02481