

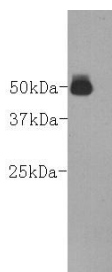
Anti-Goat IgG heavy chain Antibody (7C959)

Product Details

Reactivity:	Goat
Conjugation:	Unconjugated
Molecular Weight:	Theoretical: 50 kDa.
Clone:	7C959
Purification:	Affinity purified

Applications

Verified Activity: 1. Western blot analysis on goat serum using anti-Goat IgG heavy chain Mouse mAb.



Application:	WB
Recommended	WB: 1:10000

Properties

Stability & Storage: Store at -20°C or -80°C for 12 months. Avoid repeated freeze-thaw cycles.
Shipping: Shipping with blue ice.

Antigen Details

Immunogen: Goat IgG

Research Background

The fundamental structure of IgG contains two identical heavy chains of about 50 kDa and two identical light chains of about 25 kDa, thus tetrameric quaternary structure. Light chain, which is usually same in a natural IgG molecule, includes κ chain and λ chain, but κ or λ antibody can exist in one body simultaneously. A heavy chain includes Fab- and Fc-Fragments. This monoclonal antibody can be used to detect the heavy chain of goat immunoglobulin.

Inhibitor · Natural Compounds · Compound Libraries · Recombinant Proteins

This product is for Research Use Only · Not for Human or Veterinary or Therapeutic Use

Tel: 781-999-4286 E_mail: info@targetmol.com Address: 34 Washington Street, Wellesley Hills, MA 02481