

Anti-SLC2A2 Antibody (9R937)

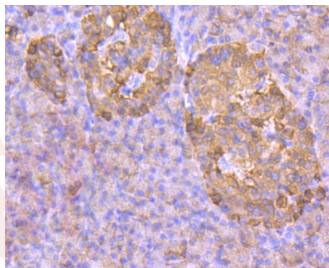
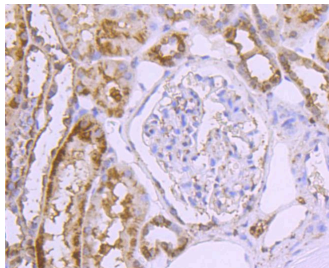
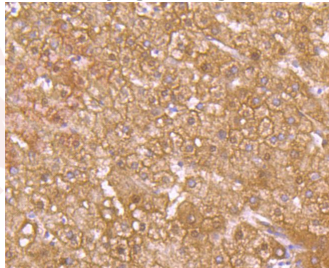
Product Details

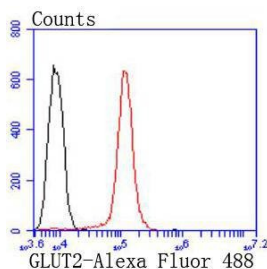
Ig Type:	IgG
Reactivity:	Human
Conjugation:	Unconjugated
Molecular Weight:	Theoretical: 57 kDa.
Clone:	9R937
Purification:	ProA affinity purified

Applications

Verified Activity:

1. Immunohistochemical analysis of paraffin-embedded human liver tissue using anti-GLUT2 antibody. Counter stained with hematoxylin.
2. Immunohistochemical analysis of paraffin-embedded human kidney tissue using anti-GLUT2 antibody. Counter stained with hematoxylin.
3. Immunohistochemical analysis of paraffin-embedded human pancreas tissue using anti-GLUT2 antibody. Counter stained with hematoxylin.
4. Flow cytometric analysis of HepG2 cells with GLUT2 antibody at 1/50 dilution (red) compared with an unlabelled control (cells without incubation with primary antibody; black). Alexa Fluor 488-conjugated goat anti rabbit IgG was used as the secondary antibody.





Application: FCM,IHC,WB

Recommended WB: 1:500-1000; IHC: 1:50-200; FCM: 1:50-100

Properties

Stability & Storage: Store at -20°C or -80°C for 12 months. Avoid repeated freeze-thaw cycles.

Shipping: Shipping with blue ice.

Antigen Details

Immunogen: Recombinant Protein

Uniprot ID: P11168

Synonyms: GLUT-2;Solute carrier family 2;Glucose transporter type 2;facilitated glucose transporter member 2;GLUT2

Research Background

Glucose is fundamental to the metabolism of mammalian cells. Its passage across cell membranes is mediated by a family of transporters termed glucose transporters or Gluts. Glut1, Glut3 and Glut4 are high-affinity transporters, whereas Glut2 is a low-affinity transporter. In adipose and muscle tissue, insulin stimulates a rapid and dramatic increase in glucose uptake, which is largely due to the redistribution of the insulin-inducible glucose transporter Glut4. In response to insulin, Glut4 is quickly shuttled from an intracellular storage site to the plasma membrane, where it binds glucose. In contrast, the ubiquitously expressed glucose transporter Glut1 is constitutively targeted to the plasma membrane and shows a much less dramatic translocation in response to insulin. Glut2 expression is seen in pancreatic beta cells, hepatocytes and basolateral membranes of intestinal and epithelial cells, while the highest expression of Glut3 has been found in neuronal tissue.

Inhibitor · Natural Compounds · Compound Libraries · Recombinant Proteins

This product is for Research Use Only · Not for Human or Veterinary or Therapeutic Use

Tel:781-999-4286 E_mail:info@targetmol.com Address:34 Washington Street,Wellesley Hills,MA 02481