

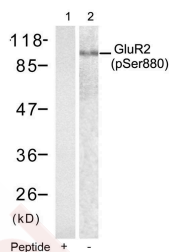
Anti-Phospho-GRIA2 (Ser880) Polyclonal Antibody

Product Details

| | |
|-------------------|--|
| Ig Type: | IgG |
| Reactivity: | Human,Mouse,Rat |
| Conjugation: | Unconjugated |
| Molecular Weight: | Actual: 100 kDa. |
| Purification: | Antibodies were produced by immunizing rabbits with synthetic phosphopeptide and KLH conjugates. Antibodies were purified by affinity-chromatography using epitope-specific phosphopeptide. Non-phospho specific antibodies were removed by chromatography using non-phosphopeptide. |

Applications

Verified Activity: 1. Western blot analysis of extracts from mouse brain tissue using Glutamate receptor 2 (Precursor) (phospho-Ser880) antibody TMAC-01680 (Lane 2) and the same antibody preincubated with blocking peptide (Lane1).



Application: WB

Properties

| | |
|----------------------|---|
| Stability & Storage: | Store at 2°C-8°C for 1 month. Store at -20°C or -80°C for 12 months. Avoid repeated freeze-thaw cycles. |
| Shipping: | Shipping with blue ice. |

Antigen Details

| | |
|------------------|---|
| Immunogen: | Peptide sequence around phosphorylation site of serine 880 (I-E-S(p)-V-K) derived from Human Glutamate receptor 2 |
| Antigen Species: | human |
| Uniprot ID: | P42262 |
| Synonyms: | GRIA2 (p-S880);p-GRIA2 (S880);p-GRIA2 (Ser880);GRIA2 (p-Ser880) |

Research Background

Ionotropic glutamate receptor. L-glutamate acts as an excitatory neurotransmitter at many synapses in the central nervous system. Binding of the excitatory neurotransmitter L-glutamate induces a conformation change, leading to the opening of the cation channel, and thereby converts the chemical signal to an electrical impulse. The receptor then desensitizes rapidly and enters a transient inactive state, characterized by the presence of bound agonist.

Inhibitor · Natural Compounds · Compound Libraries · Recombinant Proteins

This product is for Research Use Only · Not for Human or Veterinary or Therapeutic Use

Tel:781-999-4286 E_mail:info@targetmol.com Address:34 Washington Street,Wellesley Hills,MA 02481