

## Anti-SLC2A3 Antibody (8J554)

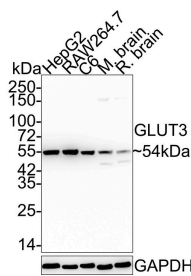
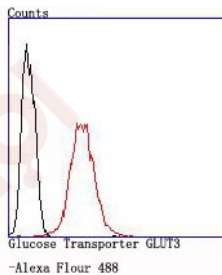
### Product Details

Ig Type:	IgG
Reactivity:	Human,Mouse,Rat
Conjugation:	Unconjugated
Molecular Weight:	Theoretical: 54 kDa.
Clone:	8J554
Purification:	ProA affinity purified

### Applications

#### Verified Activity:

1. Flow cytometric analysis of SH-SY5Y cells with Glucose Transporter GLUT3 antibody at 1/100 dilution (red) compared with an unlabelled control (cells without incubation with primary antibody; black).
2. Western blot analysis of Glucose Transporter GLUT3 on different lysates with GLUT3 antibody at 1/5000 dilution. Lane 1: HepG2 cell lysate (20 µg/Lane), Lane 2: RAW264.7 cell lysate (20 µg/Lane), Lane 3: C6 cell lysate (20 µg/Lane), Lane 4: Mouse brain tissue lysate (20 µg/Lane), Lane 5: Rat brain tissue lysate (20 µg/Lane), Predicted band size: 54 kDa, Observed band size: 54 kDa.



Application: FCM,WB

Recommended WB: 1:5000; FCM: 1:50-100

### Properties

Stability & Storage: Store at -20°C or -80°C for 12 months. Avoid repeated freeze-thaw cycles.

Shipping: Shipping with blue ice.

---

### Antigen Details

Immunogen: A synthesized peptide: within Human GLUT3

Antigen Species: human

Uniprot ID: P11169

Synonyms: Solute carrier family 2;GLUT3;GLUT-3;Glucose transporter type 3;facilitated glucose transporter member 3

---

### Research Background

Glucose is fundamental to the metabolism of mammalian cells. Its passage across cell membranes is mediated by a family of transporters termed glucose transporters or Gluts. Glut1, Glut3 and Glut4 are high-affinity transporters, whereas Glut2 is a low-affinity transporter. In adipose and muscle tissue, Insulin stimulates a rapid and dramatic increase in glucose uptake, largely due to the redistribution of the Insulin-inducible glucose transporter, Glut4. In response to Insulin, Glut4 is quickly shuttled from an intracellular storage site to the plasma membrane, where it binds glucose. In contrast, the ubiquitously expressed glucose transporter Glut1 is constitutively targeted to the plasma membrane and shows a much less dramatic translocation in response to Insulin. Glut2 expression is seen in pancreatic b cells, hepatocytes and basolateral membranes of intestinal and epithelial cells, while the highest expression of Glut3 has been found in neuronal tissue.

**Inhibitor · Natural Compounds · Compound Libraries · Recombinant Proteins**

This product is for Research Use Only · Not for Human or Veterinary or Therapeutic Use

Tel:781-999-4286 E\_mail:info@targetmol.com Address:34 Washington Street,Wellesley Hills,MA 02481

---