

## Anti-GCG Antibody (2S820)

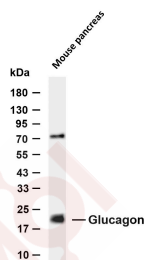
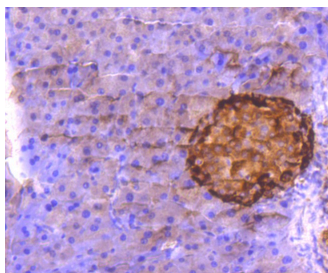
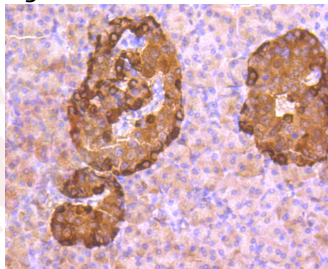
### Product Details

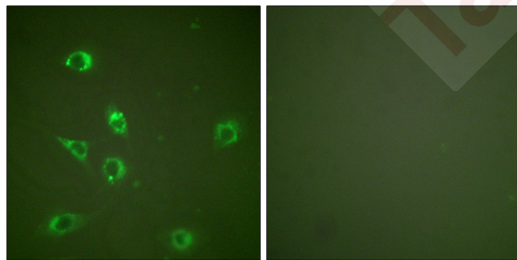
Ig Type:	IgG
Reactivity:	Human,Mouse,Rat
Conjugation:	Unconjugated
Molecular Weight:	Theoretical: 21 kDa.
Clone:	2S820
Purification:	ProA affinity purified

### Applications

#### Verified Activity:

1. Immunohistochemical analysis of paraffin-embedded human pancreas tissue using anti-Glucagon antibody. Counter stained with hematoxylin.
2. Immunohistochemical analysis of paraffin-embedded mouse pancreas tissue using anti-Glucagon antibody. Counter stained with hematoxylin.
3. Various whole cell lysates were separated by 4-20% SDS-PAGE, and the membrane was blotted with anti-Glucagon antibody.
4. Immunofluorescence analysis of NIH/3T3 cells, using Glucagon Antibody. The picture on the right is blocked with the synthesized peptide.





Application: IHC,WB

Recommended WB: 1:500-1000; IHC: 1:50-200

---

#### Properties

Stability & Storage: Store at -20°C or -80°C for 12 months. Avoid repeated freeze-thaw cycles.

Shipping: Shipping with blue ice.

---

#### Antigen Details

Immunogen: Recombinant Protein

Uniprot ID: P01275

Synonyms: Incretin Hormone;Glicentin-Related Polypeptide;GCG;Glucagon-Like Peptide 1;OXY;OXM;GRPP;Oxyntomodulin;GLP-1;Glucagon;GLP-2;Glicentin;Glucagon-Like Peptide 2

---

#### Research Background

Glucagon is a pancreatic hormone that functions as an antagonist to insulin, stimulating the conversion of glycogen to glucose and increasing blood sugar levels. Glucagon-like peptide-1 (GLP-1), Glucagon-like peptide-2 (GLP-2), VIP (vasoactive intestinal peptide) and PACAP (pituitary adenylate cyclase activating polypeptide) are members of the glucagon family of hormones. GLP-1 functions as a transmitter in the central nervous system, inhibiting feeding and drinking behavior, whereas GLP-2 is a stimulator of intestinal epithelial growth. VIP causes vasodilation resulting in the lowering of blood pressure. PACAP is abundant in the hypothalamus and has been shown to increase the synthesis of several hormones, including growth hormone.

**Inhibitor · Natural Compounds · Compound Libraries · Recombinant Proteins**

This product is for Research Use Only· Not for Human or Veterinary or Therapeutic Use

Tel:781-999-4286 E\_mail:info@targetmol.com Address:34 Washington Street,Wellesley Hills,MA 02481

---