

Anti-GCG Antibody (4G298)

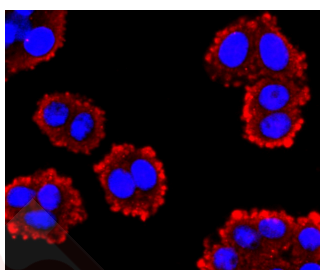
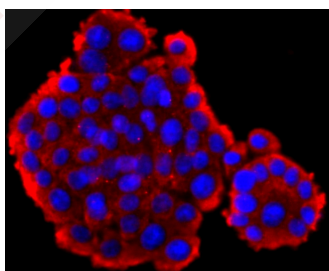
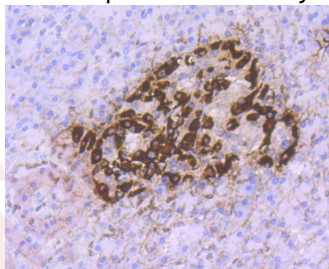
Product Details

Ig Type:	IgG
Reactivity:	Human
Conjugation:	Unconjugated
Molecular Weight:	Theoretical: 21/8/4 kDa.
Clone:	4G298
Purification:	ProA affinity purified

Applications

Verified Activity:

1. Immunohistochemical analysis of paraffin-embedded human pancreas tissue using anti-GLP1 antibody. Counter stained with hematoxylin.
2. ICC staining GLP1 in PC-12 cells (red). The nuclear counter stain is DAPI (blue). Cells were fixed in paraformaldehyde, permeabilised with 0.25% Triton X100/PBS.
3. ICC staining GLP1 in SW480 cells (red). The nuclear counter stain is DAPI (blue). Cells were fixed in paraformaldehyde, permeabilised with 0.25% Triton X100/PBS.



Application: ICC/IF,IHC,WB

Recommended WB: 1:500-1000; IHC: 1:50-200; ICC/IF: 1:50-200

Properties

Stability & Storage: Store at -20°C or -80°C for 12 months. Avoid repeated freeze-thaw cycles.

Shipping: Shipping with blue ice.

Antigen Details

Immunogen: Recombinant Protein

Uniprot ID: P01275

Synonyms: OXY;Glucagon-Like Peptide 1;GCG;GLP-2;Incretin Hormone;Glicentin;Glucagon;Glicentin-Related Polypeptide;Glucagon-Like Peptide 2;OXM;GLP-1;GRPP;Oxyntomodulin

Research Background

Glucagon is a pancreatic hormone that functions as an antagonist to insulin, stimulating the conversion of glycogen to glucose and increasing blood sugar levels. Glucagon-like peptide-1 (GLP-1), Glucagon-like peptide-2 (GLP-2), VIP (vasoactive intestinal peptide) and PACAP (pituitary adenylate cyclase activating polypeptide) are members of the Glucagon family of hormones. GLP-1 functions as a transmitter in the central nervous system, inhibiting feeding and drinking behavior, whereas GLP-2 is a stimulator of intestinal epithelial growth. VIP causes vasodilation resulting in the lowering of blood pressure. PACAP is abundant in the hypothalamus and has been shown to increase the synthesis of several hormones, including growth hormone.

Inhibitor · Natural Compounds · Compound Libraries · Recombinant Proteins

This product is for Research Use Only · Not for Human or Veterinary or Therapeutic Use

Tel:781-999-4286 E_mail:info@targetmol.com Address:34 Washington Street,Wellesley Hills,MA 02481