

Anti-GLI1 Antibody (6E606)

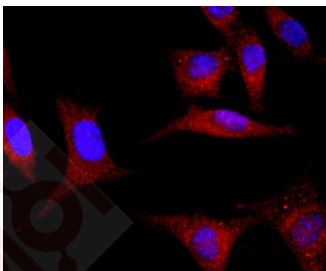
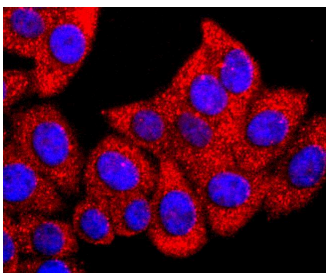
Product Details

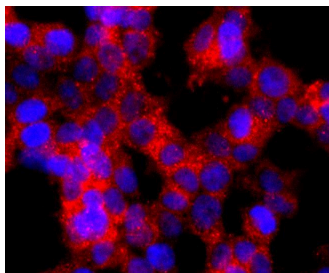
Ig Type:	IgG
Reactivity:	Human,Mouse,Rat
Conjugation:	Unconjugated
Molecular Weight:	Theoretical: 150 kDa.
Clone:	6E606
Purification:	ProA affinity purified

Applications

Verified Activity:

1. Western blot analysis of Gli1 on SH-SY-5Y cells lysates using anti-Gli1 antibody at 1/1,000 dilution.
2. ICC staining Gli1 in HepG2 cells (red). The nuclear counter stain is DAPI (blue). Cells were fixed in paraformaldehyde, permeabilised with 0.25% Triton X100/PBS.
3. ICC staining Gli1 in SH-SY-5Y cells (red). The nuclear counter stain is DAPI (blue). Cells were fixed in paraformaldehyde, permeabilised with 0.25% Triton X100/PBS.
4. ICC staining Gli1 in 293T cells (red). The nuclear counter stain is DAPI (blue). Cells were fixed in paraformaldehyde, permeabilised with 0.25% Triton X100/PBS.





Application: ICC,IHC,WB

Recommended WB: 1:500-1000; IHC: 1:50-200; ICC: 1:50-200

Properties

Stability & Storage: Store at -20°C or -80°C for 12 months. Avoid repeated freeze-thaw cycles.

Shipping: Shipping with blue ice.

Antigen Details

Immunogen: Recombinant Protein

Uniprot ID: P08151

Synonyms: Oncogene GLI;Glioma-associated oncogene;Zinc finger protein GLI1;GLI1;GLI

Research Background

Zinc-finger proteins contain DNA-binding domains and have a wide variety of functions, most of which encompass some form of transcriptional activation or repression. The majority of zinc-finger proteins contain a Kr??ppel-type DNA binding domain and a KRAB domain, which is thought to interact with KAP1, thereby recruiting histone modifying proteins. GLI-1 (GLI family zinc finger 1), also known as Glioma-associated oncogene or oncogene GLI, is a 1,106 amino acid protein that localizes to both the cytoplasm and nucleus, and belongs to the GLI C2H2-type zinc-finger protein family. GLI-1 acts as a transcriptional activator and is thought to play a role in craniofacial development. GLI-1 exists as two alternatively spliced isoforms and is encoded by a gene that maps to human chromosome 12q13.3.

Inhibitor · Natural Compounds · Compound Libraries · Recombinant Proteins

This product is for Research Use Only · Not for Human or Veterinary or Therapeutic Use

Tel:781-999-4286 E_mail:info@targetmol.com Address:34 Washington Street,Wellesley Hills,MA 02481
