

Anti-GIT1 Antibody (6A39)

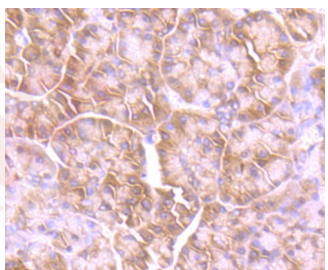
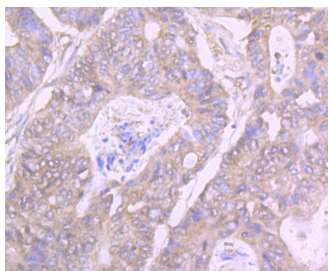
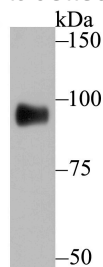
Product Details

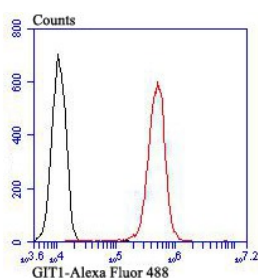
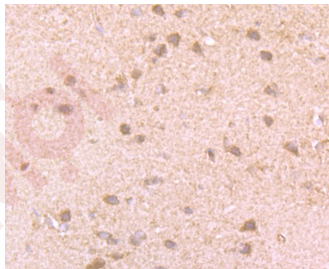
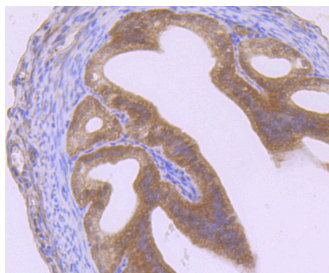
Ig Type:	IgG
Reactivity:	Human,Mouse,Rat
Conjugation:	Unconjugated
Molecular Weight:	Theoretical: 85 kDa.
Clone:	6A39
Purification:	ProA affinity purified

Applications

Verified Activity:

1. Western blot analysis of GIT1 on A549 cell using anti-GIT1 antibody at 1/500 dilution.
2. Immunohistochemical analysis of paraffin-embedded human colon cancer tissue using anti-GIT1 antibody. Counter stained with hematoxylin.
3. Immunohistochemical analysis of paraffin-embedded human pancreas tissue using anti-GIT1 antibody. Counter stained with hematoxylin.
4. Immunohistochemical analysis of paraffin-embedded mouse fallopian tubes tissue using anti-GIT1 antibody. Counter stained with hematoxylin.
5. Immunohistochemical analysis of paraffin-embedded rat brain tissue using anti-GIT1 antibody. Counter stained with hematoxylin.
6. Flow cytometric analysis of A549 cells with GIT1 antibody at 1/100 dilution (red) compared with an unlabelled control (cells without incubation with primary antibody; black).





Application: FCM,IHC,WB

Recommended WB: 1:500-1000; IHC: 1:50-200; FCM: 1:50-100

Properties

Stability & Storage: Store at -20°C or -80°C for 12 months. Avoid repeated freeze-thaw cycles.

Shipping: Shipping with blue ice.

Antigen Details

Immunogen: Recombinant Protein

Uniprot ID: Q9Y2X7

Synonyms: ARF GAP GIT1;GRK-interacting protein 1;Cool associated and tyrosine phosphorylated protein 1;GRK interacting protein 1;ARF GTPase-activating protein GIT1;G protein coupled receptor kinase interactor 1;GIT1_HUMAN;CAT 1;G protein coupled receptor kinase interacting ArfGAP 1; ARF GTPase activating protein GIT1;CaT1;Cool-associated and tyrosine-phosphorylated protein 1;GIT 1;CAT-1;G protein-coupled receptor kinase-interactor 1

Research Background

Heterotrimeric G protein-mediated signal transduction is a dynamically regulated process with the intensity of signal decreasing over time despite the continued presence of the agonist. G protein-coupled receptor kinases (GRKs) are activated by activated G protein-coupled receptors, and they function to phosphorylate and inactivate cell surface receptors in the heterotrimeric G protein signaling cascade. GIT1 (for GRK-interactor 1) and GIT2 are GTPase-activating proteins (GAP) for members of the ADP ribosylation factor (ARF) family of small GTP-binding proteins, which are involved in vesicular trafficking. GIT1 overexpression results in reduced internalization and resensitization of b2-adrenergic receptor, thus reducing b2-adrenergic receptor signaling.

Inhibitor · Natural Compounds · Compound Libraries · Recombinant Proteins

This product is for Research Use Only · Not for Human or Veterinary or Therapeutic Use

Tel:781-999-4286 E_mail:info@targetmol.com Address:34 Washington Street,Wellesley Hills,MA 02481