

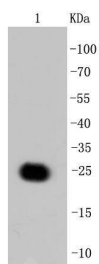
Anti-GFP Antibody (7X758)

Product Details

Ig Type:	IgG
Reactivity:	Aequorea victoria
Conjugation:	Unconjugated
Molecular Weight:	Theoretical: 27 kDa.
Clone:	7X758
Purification:	ProA affinity purified

Applications

Verified Activity: 1. Western blot analysis of GFP on recombinant GFP protein using anti-GFP antibody at 1/5,000 dilution.



Application:	ICC/IF,IHC,WB
Recommended	WB: 1:5000-10000; IHC: 1:200-500; ICC/IF: 1:100-500

Properties

Stability & Storage:	Store at -20°C or -80°C for 12 months. Avoid repeated freeze-thaw cycles.
Shipping:	Shipping with blue ice.

Antigen Details

Immunogen:	Recombinant Protein
Synonyms:	GFP Protein

Research Background

Green fluorescence protein (GFP) is derived from the jellyfish *Aequorea victoria*, which emits green light (emission peak at a wavelength of 509 nm) when excited by blue light (excitation peak at a wavelength of 395 nm). GFP fluorescence is stable under fixation conditions and suitable for a variety of applications. It has been widely used as a reporter for gene expression, enabling researchers to visualize and localize GFP-tagged proteins within living cells without chemical staining.

Inhibitor · Natural Compounds · Compound Libraries · Recombinant Proteins

This product is for Research Use Only. Not for Human or Veterinary or Therapeutic Use

Tel:781-999-4286 E_mail:info@targetmol.com Address:34 Washington Street,Wellesley Hills,MA 02481