

Anti-GFP Polyclonal Antibody 2

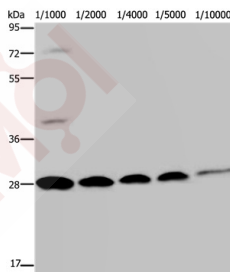
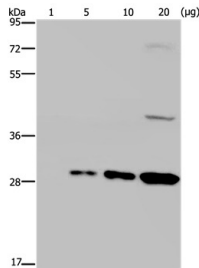
Product Details

Ig Type:	IgG
Conjugation:	Unconjugated
Molecular Weight:	Actual: 27 kDa.
Purification:	Antigen affinity purification.

Applications

Verified Activity:

1. Gel: 8%SDS-PAGE, Lysate: 20ug GFP transfected 293T cell, Primary antibody: 1/800 dilution, Secondary antibody dilution: 1/8000, Exposure time: 30 seconds.
2. Gel: 8%SDS-PAGE, Lysates: 20ug GFP transfected 293T cell per lane, Primary antibody: at various dilution, Secondary antibody dilution: 1/8000, Exposure time: 30 seconds.



Application:	WB
Recommended	WB: 1:1000-10000

Properties

Stability & Storage:	Store at -20°C or -80°C for 12 months. Avoid repeated freeze-thaw cycles.
Shipping:	Shipping with blue ice.

Antigen Details

Immunogen: Full length fusion protein

Uniprot ID: P42212

Synonyms: GFP Protein

Research Background

Green fluorescence protein (GFP) is a 27 kDa protein derived from the jellyfish *Aequorea victoria*, which emits green light (emission peak at a wavelength of 509 nm) when excited by blue light (excitation peak at a wavelength of 395 nm). Green Fluorescent Protein (GFP) has become an invaluable tool in cell biology research, since its intrinsic fluorescence can be visualized in living cells.

Inhibitor · Natural Compounds · Compound Libraries · Recombinant Proteins

This product is for Research Use Only · Not for Human or Veterinary or Therapeutic Use

Tel: 781-999-4286 E_mail: info@targetmol.com Address: 34 Washington Street, Wellesley Hills, MA 02481