

Anti-GFAP Antibody (6C642)

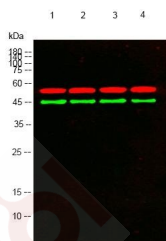
Product Details

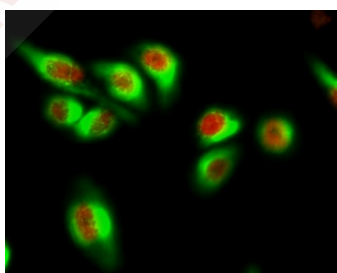
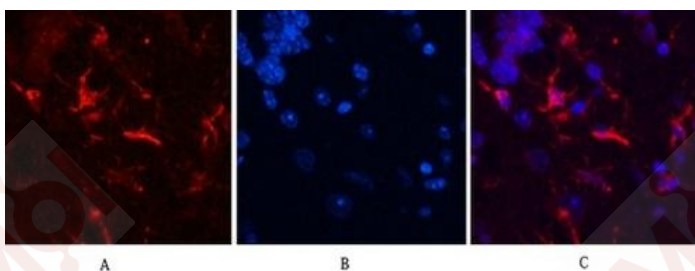
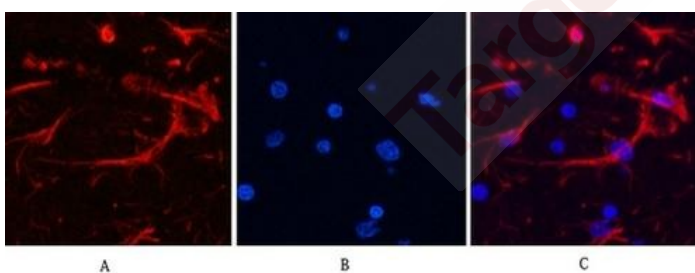
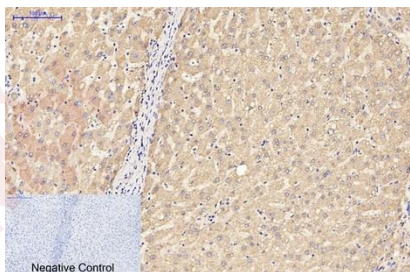
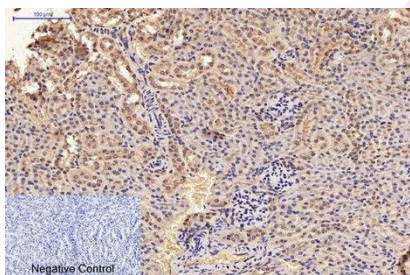
Reactivity:	Human, Mouse, Rat
Conjugation:	Unconjugated
Molecular Weight:	Actual: 45 kDa.
Clone:	6C642
Purification:	The antibody was affinity-purified from mouse ascites by affinity-chromatography using specific immunogen.

Applications

- Western blot analysis of lysates from 1) Rat Brain Tissue, 2) HeLa, 3) A431, 4) PC12 cells, (Green) primary antibody was diluted at 1:1000, 4°C overnight, secondary antibody was diluted at 1:10000, 37°C 1 hour. (Red) Tubulin β Polyclonal Antibody antibody was diluted at 1:5000 as loading control, 4°C overnight, secondary antibody was diluted at 1:10000, 37°C 1 hour.
- Immunohistochemical analysis of paraffin-embedded Mouse-kidney tissue. 1, GFAP Monoclonal Antibody was diluted at 1:200 (4°C, overnight). 2, Sodium citrate pH 6.0 was used for antibody retrieval (>98°C, 20 min). 3, Secondary antibody was diluted at 1:200 (room temperature, 30 min). Negative control was used by secondary antibody only.
- Immunohistochemical analysis of paraffin-embedded Human-liver tissue. 1, GFAP Monoclonal Antibody was diluted at 1:200 (4°C, overnight). 2, Sodium citrate pH 6.0 was used for antibody retrieval (>98°C, 20 min). 3, Secondary antibody was diluted at 1:200 (room temperature, 30 min). Negative control was used by secondary antibody only.
- Immunofluorescence analysis of Rat-brain tissue. 1, GFAP Monoclonal Antibody (red) was diluted at 1:200 (4°C, overnight). 2, Cy3 labeled Secondary antibody was diluted at 1:300 (room temperature, 50 min). 3, Picture B: DAPI (blue) 10 min. Picture A: Target. Picture B: DAPI. Picture C: merge of A+B.
- Immunofluorescence analysis of Mouse-brain tissue. 1, GFAP Monoclonal Antibody (red) was diluted at 1:200 (4°C, overnight). 2, Cy3 labeled Secondary antibody was diluted at 1:300 (room temperature, 50 min). 3, Picture B: DAPI (blue) 10 min. Picture A: Target. Picture B: DAPI. Picture C: merge of A+B.
- Immunofluorescence analysis of HeLa cell. 1, AR Polyclonal Antibody (red) was diluted at 1:200 (4°C overnight). GFAP Monoclonal Antibody (green) was diluted at 1:200 (4°C overnight). 2, Goat Anti Rabbit Alexa Fluor 594 was diluted at 1:1000 (room temperature, 50 min). Goat Anti Mouse Alexa Fluor 488 was diluted at 1:1000 (room temperature, 50 min).

Verified Activity:





Application: IF,IHC,WB

Recommended WB: 1:2000-5000; IHC: 1:50-300; IF: 1:100-200

Properties

Stability & Storage: Store at -20°C or -80°C for 12 months. Avoid repeated freeze-thaw cycles.

Shipping: Shipping with blue ice.

Antigen Details

Uniprot ID: P14136
Synonyms: Glial Fibrillary Acidic Protein;GFAP

Research Background

This gene encodes one of the major intermediate filament proteins of mature astrocytes. It is used as a marker to distinguish astrocytes from other glial cells during development. Mutations in this gene cause Alexander disease, a rare disorder of astrocytes in the central nervous system. Alternative splicing results in multiple transcript variants encoding distinct isoforms. [provided by RefSeq, Oct 2008],

Inhibitor · Natural Compounds · Compound Libraries · Recombinant Proteins

This product is for Research Use Only · Not for Human or Veterinary or Therapeutic Use

Tel:781-999-4286 E_mail:info@targetmol.com Address:34 Washington Street,Wellesley Hills,MA 02481