

Anti-Gephyrin Antibody (6M904)

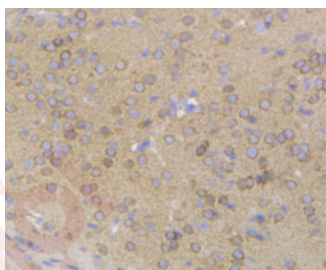
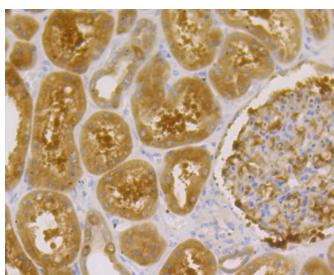
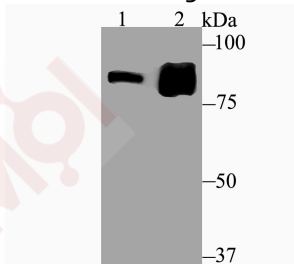
Product Details

Ig Type:	IgG
Reactivity:	Human,Mouse,Rat
Conjugation:	Unconjugated
Molecular Weight:	Theoretical: 80 kDa.
Clone:	6M904
Purification:	ProA affinity purified

Applications

Verified Activity:

1. Western blot analysis of Gephyrin on SK-Br-3 cell (1) and rat kidney tissue (2) lysate using anti-Gephyrin antibody at 1/500 dilution.
2. Immunohistochemical analysis of paraffin-embedded human kidney tissue using anti-Gephyrin antibody. Counter stained with hematoxylin. The section was pre-treated using heat mediated antigen retrieval with sodium citrate buffer (pH6) for 20 mins.
3. Immunohistochemical analysis of paraffin-embedded mouse brain tissue using anti-Gephyrin antibody. Counter stained with hematoxylin. The section was pre-treated using heat mediated antigen retrieval with sodium citrate buffer (pH6) for 20 mins.



Application:	IHC,WB
Recommended	WB: 1:500-2000; IHC: 1:50-200

Properties

Stability & Storage: Store at -20°C or -80°C for 12 months. Avoid repeated freeze-thaw cycles.

Shipping: Shipping with blue ice.

Antigen Details

Uniprot ID: Q9NQX3

Synonyms: GEPH;GPHRYN;Domain E;Molybdopterin molybdenumtransferase;GPH;MPT
adenylyltransferase;Domain G;MPT Mo-transferase;GPHN;GEPH_HUMAN;KIAA1385

Research Background

The sub-membraneous region at the postsynaptic membrane contains a number of proteins critical for receptor targeting. Gephyrin is a microtubule-associated protein highly expressed in brain and localized to neuronal postsynaptic membranes. Gephyrin is essential for the postsynaptic localization of the inhibitory glycine receptor and is thought to anchor the receptor to subsynaptic microtubules. The protein is expressed in most mammalian tissues with predominant expression in brain. At least five additional splice variants of Gephyrin ranging in molecular weight have been identified in rat and human brain tissue.

Inhibitor · Natural Compounds · Compound Libraries · Recombinant Proteins

This product is for Research Use Only · Not for Human or Veterinary or Therapeutic Use

Tel:781-999-4286 E_mail:info@targetmol.com Address:34 Washington Street,Wellesley Hills,MA 02481
