

Anti-GEF H1 Antibody (3H958)

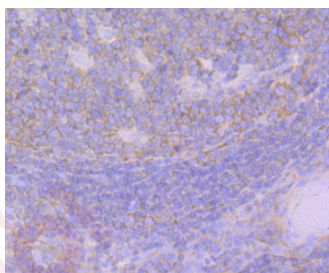
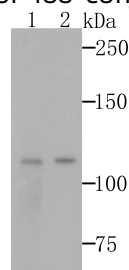
Product Details

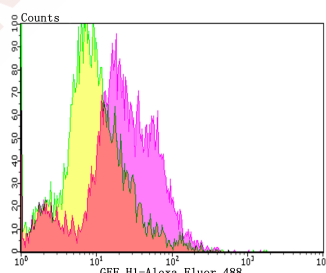
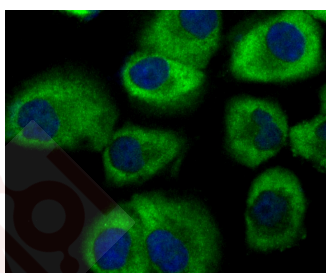
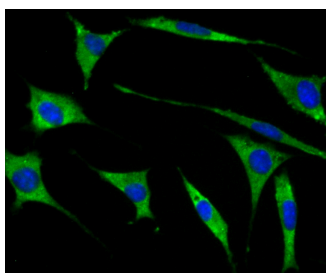
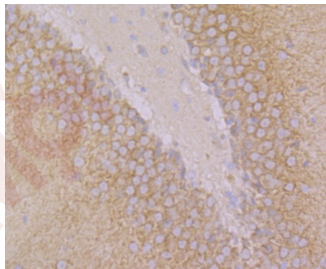
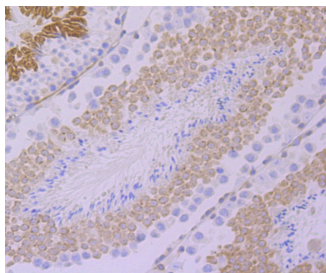
Ig Type:	IgG
Reactivity:	Human,Mouse,Rat
Conjugation:	Unconjugated
Molecular Weight:	Theoretical: 111 kDa.
Clone:	3H958
Purification:	ProA affinity purified

Applications

Verified Activity:

1. Western blot analysis of GEF H1 on 293T and A431 cells lysates using anti-GEF H1 antibody at 1/500 dilution.
2. Immunohistochemical analysis of paraffin-embedded human tonsil tissue using anti-GEF H1 antibody. Counter stained with hematoxylin.
3. Immunohistochemical analysis of paraffin-embedded mouse testis tissue using anti-GEF H1 antibody. Counter stained with hematoxylin.
4. Immunohistochemical analysis of paraffin-embedded rat brain tissue using anti-GEF H1 antibody. Counter stained with hematoxylin.
5. ICC staining GEF H1 in SH-SY-5Y cells (green). The nuclear counter stain is DAPI (blue). Cells were fixed in paraformaldehyde, permeabilised with 0.25% Triton X100/PBS.
6. ICC staining GEF H1 in HUVEC cells (green). The nuclear counter stain is DAPI (blue). Cells were fixed in paraformaldehyde, permeabilised with 0.25% Triton X100/PBS.
7. Flow cytometric analysis of HL-60 cells with GEF H1 antibody at 1/100 dilution (yellow) compared with an unlabelled control (cells without incubation with primary antibody; purple). Alexa Fluor 488-conjugated goat anti-rabbit IgG was used as the secondary antibody.





Application: FCM, ICC, IF, IHC, WB

Recommended WB: 1:500; IHC: 1:50-200; ICC: 1:50-200; FCM: 1:50-100

Properties

Stability & Storage: Store at -20°C or -80°C for 12 months. Avoid repeated freeze-thaw cycles.

Shipping: Shipping with blue ice.

Antigen Details

Immunogen: Recombinant Protein: C-terminal human GEF H1

Antigen Species: human

Uniprot ID: Q92974

Synonyms: ARHGEF2;ARHG2;Rho guanine nucleotide exchange factor 2;P40;ARHG2_HUMAN;rho/rac guanine nucleotide exchange factor (GEF) 2;rho/rac guanine nucleotide exchange factor; ARHGEF 2;mKIAA0651;rho/rac guanine nucleotide exchange factor 2;Microtubule-regulated Rho-GEF;GEF-H1;Protein GEF-H1;GEFH1;LFP40;GEF;Proliferating cell nucleolar antigen p40;GEF H1;ARHGEF-2;KIAA0651;Guanine nucleotide exchange factor H1;AA408978;Lbcl1;Lfc; MGC95068

Research Background

Activates Rho-GTPases by promoting the exchange of GDP for GTP. May be involved in epithelial barrier permeability, cell motility and polarization, dendritic spine morphology, antigen presentation, leukemic cell differentiation, cell cycle regulation, innate immune response, and cancer. May stimulate instead the cortical activity of Rac. Inactive toward CDC42, TC10, or Ras-GTPases. Forms an intracellular sensing system along with NOD1 for the detection of microbial effectors during cell invasion by pathogens. Required for RHOA and RIP2 dependent NF-kappaB signaling pathways activation upon *S.flexneri* cell invasion. Involved not only in sensing peptidoglycan (PGN)-derived muropeptides through NOD1 that is independent of its GEF activity, but also in the activation of NF-kappaB by *Shigella* effector proteins (IpgB2 and OspB) which requires its GEF activity and the activation of RhoA.

Inhibitor · Natural Compounds · Compound Libraries · Recombinant Proteins

This product is for Research Use Only · Not for Human or Veterinary or Therapeutic Use

Tel:781-999-4286 E_mail:info@targetmol.com Address:34 Washington Street,Wellesley Hills,MA 02481