

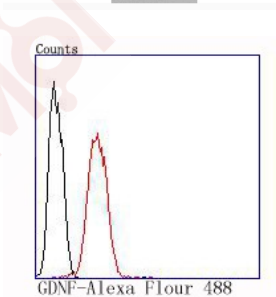
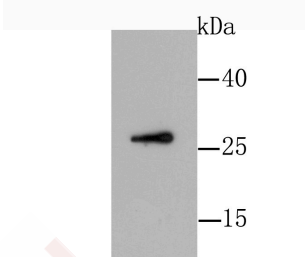
Anti-GDNF Antibody (7K481)

Product Details

Ig Type:	IgG
Reactivity:	Human,Mouse,Rat
Conjugation:	Unconjugated
Molecular Weight:	Theoretical: 24 kDa.
Clone:	7K481
Purification:	ProA affinity purified

Applications

- Verified Activity:
1. Western blot analysis of GDNF on HepG2 cell using anti-GDNF antibody at 1/1,000 dilution.
 2. Flow cytometric analysis of SH-SY5Y cells with GDNF antibody at 1/100 dilution (red) compared with an unlabelled control (cells without incubation with primary antibody; black).



Application:	FCM,WB
Recommended	WB: 1:500-1000; IHC: 1:50-200; ICC: 1:50-200; FCM: 1:50-200

Properties

- Stability & Storage: Store at -20°C or -80°C for 12 months. Avoid repeated freeze-thaw cycles.
- Shipping: Shipping with blue ice.

Antigen Details

Immunogen: Recombinant Protein

Uniprot ID: P39905

Research Background

Glial cell line-derived neurotrophic factor (GDNF) has been identified as a potent neurotrophic factor that enhances survival of midbrain dopaminergic neurons. GDNF is a glycosylated, disulfide-bonded homodimer and is a distantly related member of the TGF β superfamily of growth regulatory ligands. GDNF contains the seven conserved cysteine residues in the same relative spacing characteristic of all members of the TGF β superfamily. In embryonic midbrain cultures, GDNF promotes the survival and morphological differentiation of dopaminergic neurons and increases their high-affinity dopamine uptake. On the basis of these findings, it has been suggested that GDNF may have utility in the treatment of Parkinson's disease, which is marked by progressive degeneration of midbrain dopaminergic neurons.

Inhibitor · Natural Compounds · Compound Libraries · Recombinant Proteins

This product is for Research Use Only · Not for Human or Veterinary or Therapeutic Use

Tel:781-999-4286 E_mail:info@targetmol.com Address:34 Washington Street,Wellesley Hills,MA 02481