

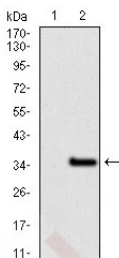
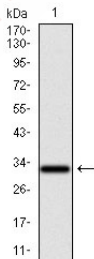
Anti-GCNF Antibody (6U757)

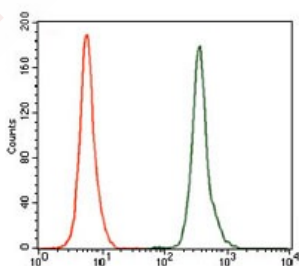
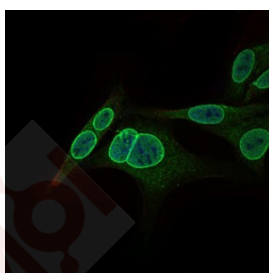
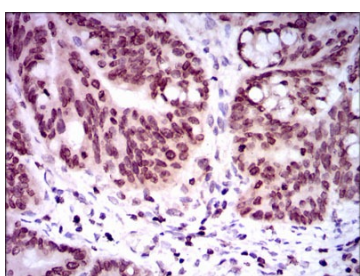
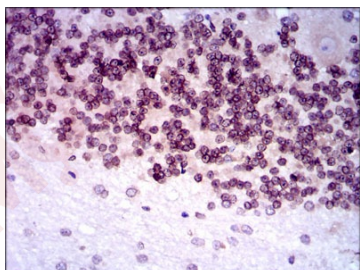
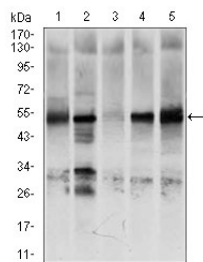
Product Details

Reactivity:	Human
Conjugation:	Unconjugated
Molecular Weight:	Theoretical: 54 kDa.
Clone:	6U757
Purification:	ProA affinity purified

Applications

1. Western blot analysis of GCNF on human GCNF recombinant protein using anti- GCNF antibody at 1/1,000 dilution.
2. Western blot analysis of GCNF on HEK293 (1) and GCNF -hIgGfc transfected HEK293 (2) cell lysate using anti-GCNF antibody at 1/1,000 dilution.
3. Western blot analysis of GCNF on different cell lysates using anti-GCNF antibody at 1/1,000 dilution. Positive control:Lane1: K562, Lane2: NTERA-2, Lane3: HEK293, Lane4: HUVE-12, Lane5: HeLa.
4. Immunohistochemical analysis of paraffin-embedded human cerebellum tissue using anti-GCNF antibody. Counter stained with hematoxylin.
5. Immunohistochemical analysis of paraffin-embedded human rectum cancer tissue using anti-GCNF antibody. Counter stained with hematoxylin.
6. ICC staining GCNF (green) in HepG2 cells. The nuclear counter stain is DAPI (blue). Cells were fixed in paraformaldehyde, permeabilised with 0.25% Triton X100/PBS.
7. Flow cytometric analysis of K562 cells with GCNF antibody at 1/100 dilution (green) compared with an unlabelled control (cells without incubation with primary antibody; red).





Application: FCM, ICC, IHC, WB

Recommended WB: 1:500-1000; IHC: 1:100-500; ICC: 1:50-200; FCM: 1:100-200

Properties

Stability & Storage: Store at -20°C or -80°C for 12 months. Avoid repeated freeze-thaw cycles.

Shipping: Shipping with blue ice.

Antigen Details

Immunogen:	Recombinant Protein
Uniprot ID:	Q15406
Synonyms:	NR 61; Nuclear receptor subfamily 6 group A member 1; Retinoic acid receptor related testis associated receptor; NR61; Retinoid receptor-related testis-specific receptor; RTR; hGCNF; GCNF1; Retinoid receptor related testis specific receptor; NR6A1_HUMAN; GCNF 1; Orphan nuclear receptor NR6A1; nr6a1; hRTR; Germ cell nuclear factor; GCNF

Research Background

Germ cell nuclear factor (GCNF) is an orphan member of the nuclear receptor gene superfamily that influences neurogenesis and germ cell development. GCNF can homodimerize and bind DNA. GCNF regulates paracrine interaction between the oocyte and somatic cells by regulating the expression of BMP-15 and GDF-9, to affect female fertility. GCNF is present in spermatocytes and round spermatids of adult male mouse testis; northern blot and ribonuclease protection assays have shown GCNF is predominant in the testis. The gene expresses three alternatively spliced transcript variants.

Inhibitor · Natural Compounds · Compound Libraries · Recombinant Proteins

This product is for Research Use Only · Not for Human or Veterinary or Therapeutic Use

Tel: 781-999-4286 E_mail: info@targetmol.com Address: 34 Washington Street, Wellesley Hills, MA 02481