

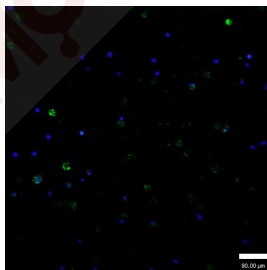
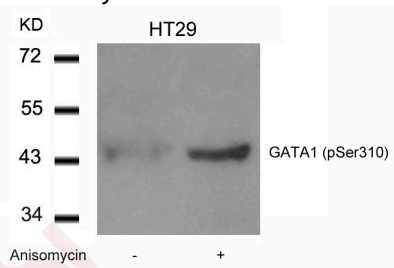
Anti-Phospho-GATA1 (Ser310) Polyclonal Antibody

Product Details

Ig Type:	IgG
Reactivity:	Human,Mouse,Rat
Conjugation:	Unconjugated
Purification:	Antibodies were produced by immunizing rabbits with synthetic phosphopeptide and KLH conjugates. Antibodies were purified by affinity-chromatography using epitope-specific phosphopeptide. Non-phospho specific antibodies were removed by chromatography using non-phosphopeptide.

Applications

- Verified Activity:
- Western blot analysis of extracts from HT29 cells untreated or treated with Anisomycin using GATA1 (Phospho-Ser310) Antibody TMAC-01628.
 - Immunofluorescence staining of methanol-fixed K562 cells using GATA1 (Phospho-Ser310) Antibody TMAC-01628.



Application: IF, WB

Properties

Stability & Storage:	Store at 2°C-8°C for 1 month. Store at -20°C or -80°C for 12 months. Avoid repeated freeze-thaw cycles.
Shipping:	Shipping with blue ice.

Antigen Details

Immunogen:	Peptide sequence around phosphorylation site of serine 310 (K-A-S(p)-G-K) derived from Human GATA1
Antigen Species:	human
Uniprot ID:	P15976
Synonyms:	GATA1 (p-S310);p-GATA1 (Ser310);p-GATA1 (S310);GATA1 (p-Ser310)

Research Background

GATA1 encodes a protein which belongs to the GATA family of transcription factors. The protein plays an important role in erythroid development by regulating the switch of fetal hemoglobin to adult hemoglobin. Mutations in this gene have been associated with X-linked dyserythropoietic anemia and thrombocytopenia.

Inhibitor · Natural Compounds · Compound Libraries · Recombinant Proteins

This product is for Research Use Only · Not for Human or Veterinary or Therapeutic Use

Tel:781-999-4286 E_mail:info@targetmol.com Address:34 Washington Street,Wellesley Hills,MA 02481