

## Anti-GATA1 Antibody (4D22)

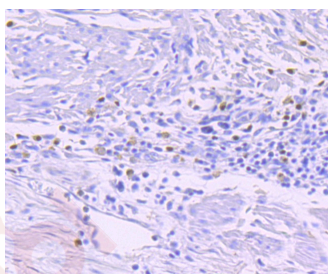
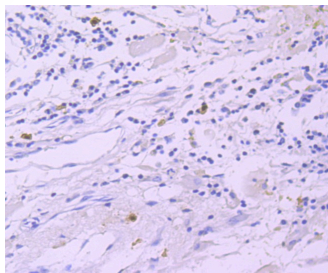
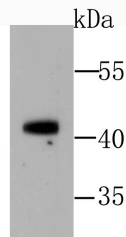
### Product Details

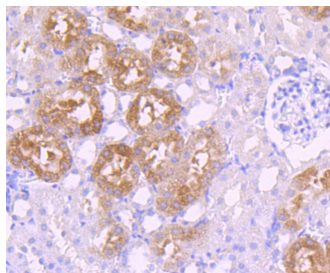
Ig Type:	IgG
Reactivity:	Human
Conjugation:	Unconjugated
Molecular Weight:	Theoretical: 43 kDa.
Clone:	4D22
Purification:	ProA affinity purified

### Applications

#### Verified Activity:

1. Western blot analysis of GATA1 on K562 cell using anti-GATA1 antibody at 1/1,000 dilution.
2. Immunohistochemical analysis of paraffin-embedded human breast cancer tissue using anti-GATA1 antibody. Counter stained with hematoxylin.
3. Immunohistochemical analysis of paraffin-embedded human liver tissue using anti-GATA1 antibody. Counter stained with hematoxylin.
4. Immunohistochemical analysis of paraffin-embedded human kidney tissue using anti-GATA1 antibody. Counter stained with hematoxylin.





Application: FCM,IHC,IP,WB

Recommended WB: 1:500-1000; IHC: 1:50-200; ICC: 1:50-200; FCM: 1:50-100

### Properties

Stability & Storage: Store at -20°C or -80°C for 12 months. Avoid repeated freeze-thaw cycles.

Shipping: Shipping with blue ice.

### Antigen Details

Immunogen: Recombinant Protein

Uniprot ID: P15976

Synonyms: XLTDA;NFE1;ERYF 1;Erythroid transcription factor;NF E1 DNA binding protein;NF E1; GATA1\_HUMAN;GATA binding protein 1;GATA-1;Eryf1;Erythroid transcription factor 1;Anemia, X-linked, without thrombocytopenia, included;GATA-binding factor 1;GATA1;GATA binding protein 1 (globin transcription factor 1);NFE 1;GATA binding factor 1;NF-E1 DNA-binding protein;GF1;XLANP;GF-1;GF 1;Transcription factor GATA1;Nuclear factor erythroid 1;XLTT;GATA 1;Globin transcription factor 1

### Research Background

Transcriptional activator which probably serves as a general switch factor for erythroid development. It binds to DNA sites with the consensus sequence [AT]GATA[AG] within regulatory regions of globin genes and of other genes expressed in erythroid cells.

**Inhibitor · Natural Compounds · Compound Libraries · Recombinant Proteins**

This product is for Research Use Only · Not for Human or Veterinary or Therapeutic Use

Tel:781-999-4286 E\_mail:info@targetmol.com Address:34 Washington Street,Wellesley Hills,MA 02481