

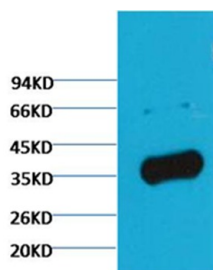
## Anti-GAPDH Polyclonal Antibody

## Product Details

Ig Type:	IgG
Reactivity:	Zebrafish
Conjugation:	Unconjugated
Molecular Weight:	Actual: 37 kDa.
Purification:	Affinity purification using immunogen.

## Applications

Verified Activity: 1. Western blot analysis of Zebrafish skeletal muscle, using TMAC-01620 diluted at 1:5,000.



Application:	IF,IHC,WB
Recommended	WB: 1:5000-10000

## Properties

Stability & Storage:	Store at -20°C or -80°C for 12 months. Avoid repeated freeze-thaw cycles.
Shipping:	Shipping with blue ice.

## Antigen Details

Uniprot ID:	P04406
Synonyms:	GAPD;G3PD;glyceraldehyde-3-phosphate dehydrogenase;HEL-S-162eP

## Research Background

Glyceraldehyde 3 phosphate dehydrogenase (GAPDH) is well known as one of the key enzymes involved in glycolysis. GAPDH is constitutively expressed in almost all tissues at high levels, therefore antibodies against GAPDH are useful as loading controls for Western Blotting. Some physiological factors, such as hypoxia and diabetes, increase GAPDH expression in certain cell types.

**Inhibitor · Natural Compounds · Compound Libraries · Recombinant Proteins**

This product is for Research Use Only. Not for Human or Veterinary or Therapeutic Use

Tel:781-999-4286 E\_mail:info@targetmol.com Address:34 Washington Street,Wellesley Hills,MA 02481