

Anti-GAPDH Antibody (4W994)

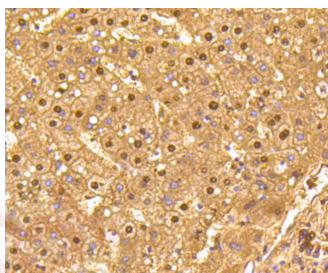
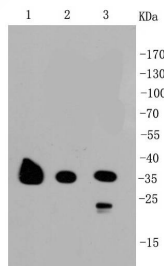
Product Details

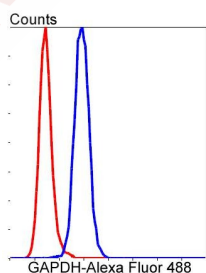
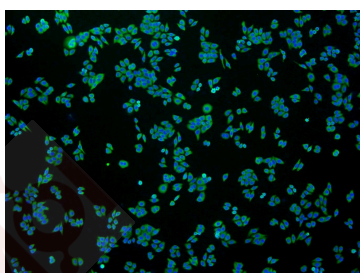
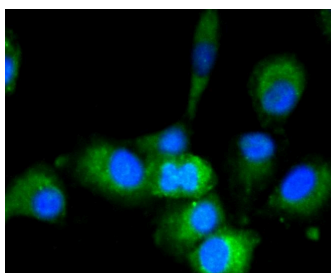
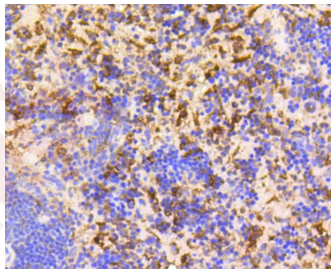
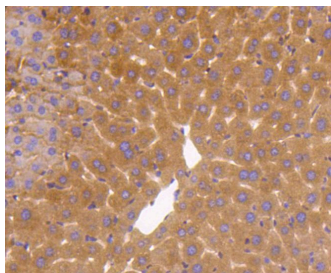
| | |
|-------------------|------------------------------------------|
| Ig Type: | IgG |
| Reactivity: | Human,Mouse,Rat,Monkey,Chicken,zebrafish |
| Conjugation: | Unconjugated |
| Molecular Weight: | Theoretical: 36 kDa. |
| Clone: | 4W994 |
| Purification: | ProA affinity purified |

Applications

Verified Activity:

1. Western blot analysis of GAPDH on different cell lysates using anti-GAPDH antibody at 1/1,000 dilution. Positive control: Lane 1: NCCIT, Lane 2: PC12, Lane 3: F9.
2. Immunohistochemical analysis of paraffin-embedded human liver tissue using anti-GAPDH antibody. Counter stained with hematoxylin.
3. Immunohistochemical analysis of paraffin-embedded mouse liver tissue using anti-GAPDH antibody. Counter stained with hematoxylin.
4. Immunohistochemical analysis of paraffin-embedded mouse spleen tissue using anti-GAPDH antibody. Counter stained with hematoxylin.
5. ICC staining GAPDH in A549 cells (green). The nuclear counter stain is DAPI (blue). Cells were fixed in paraformaldehyde, permeabilised with 0.25% Triton X100/PBS.
6. ICC staining GAPDH in HepG2 cells (green). The nuclear counter stain is DAPI (blue). Cells were fixed in paraformaldehyde, permeabilised with 0.25% Triton X100/PBS.
7. Flow cytometric analysis of HepG2 cells with GAPDH antibody at 1/50 dilution (blue) compared with an unlabelled control (cells without incubation with primary antibody; red). Alexa Fluor 488-conjugated goat anti-rabbit IgG was used as the secondary antibody.





Application: FCM, ICC/IF, IHC, IP, WB

Recommended WB: 1:1000-5000; IHC: 1:50-200; ICC/IF: 1:50-200; FCM: 1:10-100

Properties

Stability & Storage: Store at -20°C or -80°C for 12 months. Avoid repeated freeze-thaw cycles.

Shipping: Shipping with blue ice.

Antigen Details

Immunogen: Recombinant Protein

Uniprot ID: P04406

Synonyms: glyceraldehyde-3-phosphate dehydrogenase;HEL-S-162eP;GAPD;G3PD

Research Background

GAPDH (Glyceraldehyde-3-phosphate dehydrogenase) has both glyceraldehyde-3-phosphate dehydrogenase and nitrosylase activities, thereby playing a role in glycolysis and nuclear functions, respectively. It participates in nuclear events including transcription, RNA transport, DNA replication and apoptosis. GAPDH is a key enzyme in glycolysis that catalyzes the first step of the pathway by converting D-glyceraldehyde 3-phosphate (G3P) into 3-phospho-D-glyceroyl phosphate.

Inhibitor · Natural Compounds · Compound Libraries · Recombinant Proteins

This product is for Research Use Only · Not for Human or Veterinary or Therapeutic Use

Tel:781-999-4286 E_mail:info@targetmol.com Address:34 Washington Street,Wellesley Hills,MA 02481