

Anti-GAPDH Antibody (1V316)

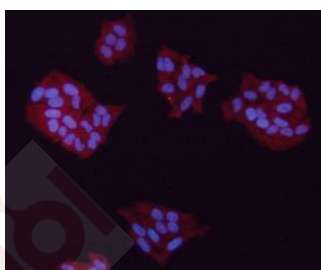
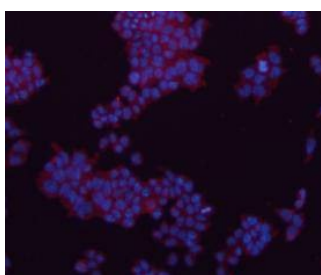
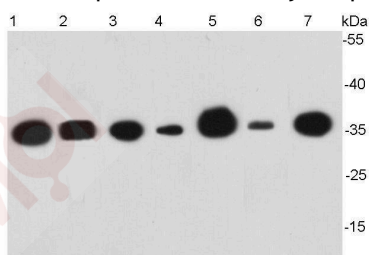
Product Details

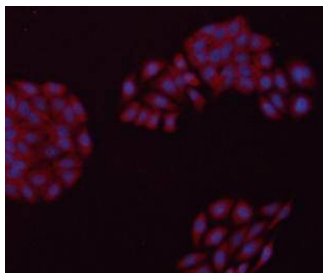
| | |
|-------------------|----------------------------------|
| Reactivity: | Human,Mouse,Rat,zebrafish,rabbit |
| Conjugation: | Unconjugated |
| Molecular Weight: | Theoretical: 36 kDa. |
| Clone: | 1V316 |
| Purification: | ProL affinity purified |

Applications

Verified Activity:

1. Western blot analysis of GAPDH on different cell lysates using anti-GAPDH antibody at 1/5000 dilution. Positive control: Lane 1: HepG2, Lane 2: Hela, Lane 3: PC12, Lane 4: NIH/3T3, Lane 5: MCF-7, Lane 6: Rabbit liver, Lane 7: Zebrafish.
2. ICC staining GAPDH in F9 cells (red). The nuclear counter stain is DAPI (blue). Cells were fixed in paraformaldehyde, permeabilised with 0.25% Triton X100/PBS.
3. ICC staining GAPDH in Hela cells (red). The nuclear counter stain is DAPI (blue). Cells were fixed in paraformaldehyde, permeabilised with 0.25% Triton X100/PBS.
4. ICC staining GAPDH in HepG2 cells (red). The nuclear counter stain is DAPI (blue). Cells were fixed in paraformaldehyde, permeabilised with 0.25% Triton X100/PBS.





Application: ICC,WB

Recommended WB: 1:5000-10000; ICC: 1:200

Properties

Stability & Storage: Store at -20°C or -80°C for 12 months. Avoid repeated freeze-thaw cycles.

Shipping: Shipping with blue ice.

Antigen Details

Immunogen: Peptide

Uniprot ID: P04406

Synonyms: HEL-S-162eP;glyceraldehyde-3-phosphate dehydrogenase;G3PD;GAPD

Research Background

GAPDH (Glyceraldehyde-3-phosphate dehydrogenase) has both glyceraldehyde-3-phosphate dehydrogenase and nitrosylase activities, thereby playing a role in glycolysis and nuclear functions, respectively. It participates in nuclear events including transcription, RNA transport, DNA replication and apoptosis. GAPDH is a key enzyme in glycolysis that catalyzes the first step of the pathway by converting D-glyceraldehyde 3-phosphate (G3P) into 3-phospho-D-glyceroyl phosphate.

Inhibitor · Natural Compounds · Compound Libraries · Recombinant Proteins

This product is for Research Use Only. Not for Human or Veterinary or Therapeutic Use

Tel:781-999-4286 E_mail:info@targetmol.com Address:34 Washington Street,Wellesley Hills,MA 02481
