

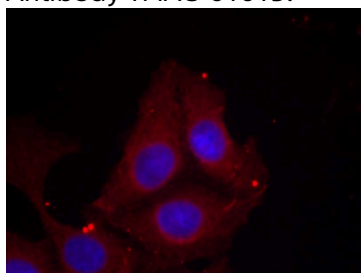
## Anti-Phospho-GAP43 (Ser41) Polyclonal Antibody

### Product Details

Ig Type:	IgG
Reactivity:	Human,Mouse,Rat
Conjugation:	Unconjugated
Purification:	Antibodies were produced by immunizing rabbits with synthetic phosphopeptide and KLH conjugates. Antibodies were purified by affinity-chromatography using epitope-specific phosphopeptide. Non-phospho specific antibodies were removed by chromatography using non-phosphopeptide.

### Applications

Verified Activity: 1. Immunofluorescence staining of methanol-fixed Hela cells using GAP43 (Phospho-Ser41) Antibody TMAC-01613.



Application: IF

### Properties

Stability & Storage: Store at 2°C-8°C for 1 month. Store at -20°C or -80°C for 12 months. Avoid repeated freeze-thaw cycles.

Shipping: Shipping with blue ice.

### Antigen Details

Immunogen: Peptide sequence around phosphorylation site of Ser41 (Q-A-S(p)-F-R) derived from Human GAP43

Antigen Species: human

Uniprot ID: P17677

Synonyms: GAP43 (p-S41);p-GAP43 (Ser41);GAP43 (p-Ser41);p-GAP43 (S41)

### Research Background

GAP43 encoded by this gene has been termed a 'growth' or 'plasticity' protein because it is expressed at high levels in neuronal growth cones during development and axonal regeneration. This protein is considered a crucial component of an effective regenerative response in the nervous system. Alternatively spliced transcript variants encoding distinct isoforms have been found for this gene.

**Inhibitor · Natural Compounds · Compound Libraries · Recombinant Proteins**

This product is for Research Use Only. Not for Human or Veterinary or Therapeutic Use

Tel:781-999-4286 E\_mail:info@targetmol.com Address:34 Washington Street,Wellesley Hills,MA 02481