

## Anti-Gamma Tubulin Antibody (3T847)

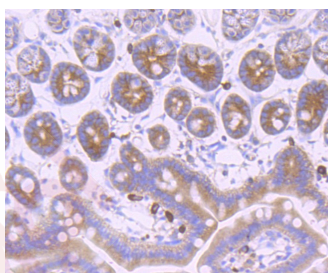
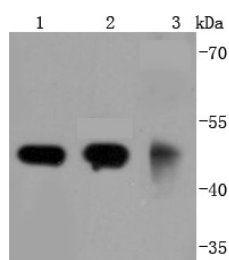
### Product Details

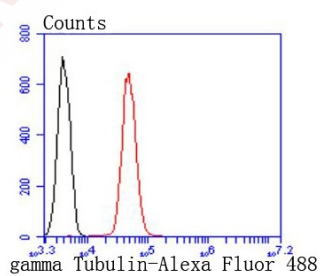
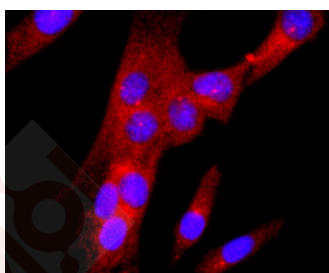
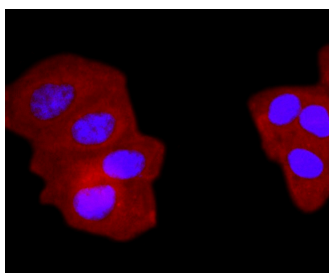
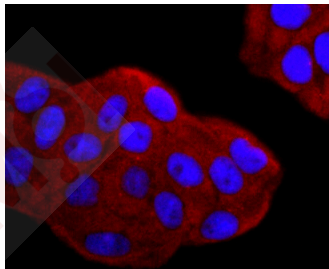
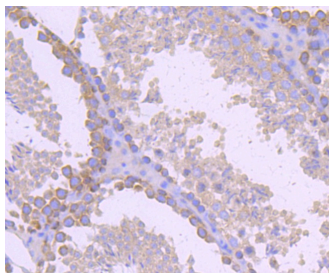
Ig Type:	IgG
Reactivity:	Human, Mouse, Rat, Monkey, Chicken, Hamouseter, Cow, Dog, Fish, Xenopus tropicalis
Conjugation:	Unconjugated
Molecular Weight:	Theoretical: 51 kDa.
Clone:	3T847
Purification:	ProA affinity purified

### Applications

1. Western blot analysis of gamma Tubulin on different lysates using anti-gamma Tubulin antibody at 1/1,000 dilution. Positive control: Lane 1: A431, Lane 2: Jurkat, Lane 3: Mouse brain.
2. Immunohistochemical analysis of paraffin-embedded mouse colon tissue using anti-gamma Tubulin antibody. Counter stained with hematoxylin.
3. Immunohistochemical analysis of paraffin-embedded mouse testis tissue using anti-gamma Tubulin antibody. Counter stained with hematoxylin.
4. ICC staining gamma Tubulin in Hela cells (red). The nuclear counter stain is DAPI (blue). Cells were fixed in paraformaldehyde, permeabilised with 0.25% Triton X100/PBS.
5. ICC staining gamma Tubulin in MCF-7 cells (red). The nuclear counter stain is DAPI (blue). Cells were fixed in paraformaldehyde, permeabilised with 0.25% Triton X100/PBS.
6. ICC staining gamma Tubulin in SHG-44 cells (red). The nuclear counter stain is DAPI (blue). Cells were fixed in paraformaldehyde, permeabilised with 0.25% Triton X100/PBS.
7. Flow cytometric analysis of Jurkat cells with gamma Tubulin antibody at 1/50 dilution (red) compared with an unlabelled control (cells without incubation with primary antibody; black). Alexa Fluor 488-conjugated goat anti rabbit IgG was used as the secondary antibody.

Verified Activity:





Application: FCM, ICC/IF, IHC, IP, WB

Recommended WB: 1:1000-2000; IHC: 1:50-200; ICC/IF: 1:50-200; FCM: 1:50-100

### Properties

Stability & Storage: Store at -20°C or -80°C for 12 months. Avoid repeated freeze-thaw cycles.

Shipping: Shipping with blue ice.

### Antigen Details

Immunogen:	Recombinant Protein
Uniprot ID:	P23258
Synonyms:	GCP 1;Tubulin gamma-2 chain;Tubulin gamma 1 chain;GTubulin; $\gamma$ Tubulin; $\gamma$ Tubulin;tubulin, gamma polypeptide;GCP1;GammaTubulin;TUBG1;Gamma-2-tubulin;TUBG;Gamma 1 tubulin;G Tubulin;Gamma Tubulin 2;TUBG2;TUBGCP1;Xgam;Gamma tubulin complex component 1; Tubulin gamma 2 chain;tubulin, gamma 2;MGC131994;TBG2_HUMAN;Tubulin gamma complex-associated protein 1;tubulin, gamma 1;Gamma Tubulin 1;Gamma 2 tubulin

### Research Background

Tubulin is a major cytoskeleton component that has five distinct forms, designated  $\alpha$ ,  $\beta$ ,  $\gamma$ ,  $\delta$  and e Tubulin.  $\alpha$  and  $\beta$  Tubulins form heterodimers which multimerize to form a microtubule filament. Multiple  $\beta$  Tubulin isoforms ( $\beta$ 1,  $\beta$ 2,  $\beta$ 3,  $\beta$ 4,  $\beta$ 5,  $\beta$ 6 and  $\beta$ 8) have been characterized and are expressed in mammalian tissues.  $\beta$ 1 and  $\beta$ 4 are present throughout the cytosol,  $\beta$ 2 is present in the nuclei and nucleoplasm, and  $\beta$ 3 is a neuron-specific cytoskeletal protein.  $\gamma$  Tubulin forms the gammasome, which is required for nucleating microtubule filaments at the centrosome. Both  $\delta$  Tubulin and e Tubulin are associated with the centrosome.  $\delta$  Tubulin is a homolog of the Chlamydomonas  $\delta$  Tubulin Uni3 and is found in association with the centrioles, whereas e Tubulin localizes to the pericentriolar material. e Tubulin exhibits a cell-cycle-specific pattern of localization, first associating with only the older of the centrosomes in a newly duplicated pair and later associating with both centrosomes.

**Inhibitor · Natural Compounds · Compound Libraries · Recombinant Proteins**

This product is for Research Use Only · Not for Human or Veterinary or Therapeutic Use

Tel:781-999-4286 E\_mail:info@targetmol.com Address:34 Washington Street,Wellesley Hills,MA 02481