

Anti-SNCG Antibody (8D869)

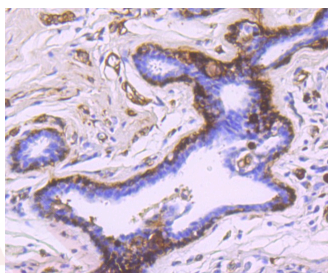
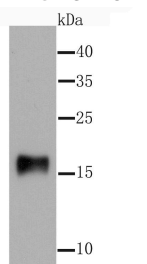
Product Details

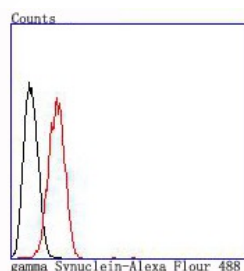
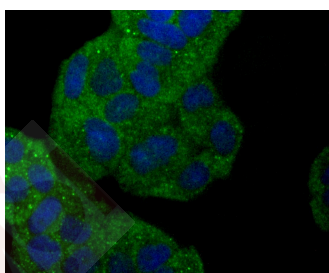
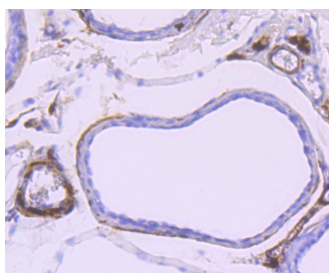
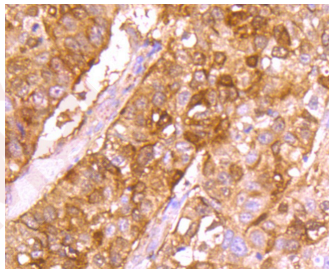
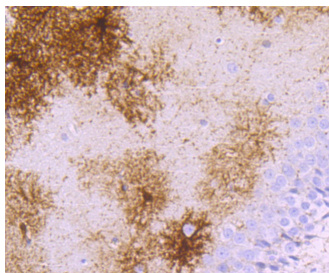
Ig Type:	IgG
Reactivity:	Human,Rat
Conjugation:	Unconjugated
Molecular Weight:	Theoretical: 16 kDa.
Clone:	8D869
Purification:	ProA affinity purified

Applications

Verified Activity:

1. Western blot analysis of gamma Synuclein on rat kidney tissue lysate using anti-gamma Synuclein antibody at 1/1,000 dilution.
2. Immunohistochemical analysis of paraffin-embedded human breast cancer tissue using anti-gamma Synuclein antibody. Counter stained with hematoxylin.
3. Immunohistochemical analysis of paraffin-embedded rat brain tissue using anti-gamma Synuclein antibody. Counter stained with hematoxylin.
4. Immunohistochemical analysis of paraffin-embedded human lung cancer tissue using anti-gamma Synuclein antibody. Counter stained with hematoxylin.
5. Immunohistochemical analysis of paraffin-embedded rat bladder tissue using anti-gamma Synuclein antibody. Counter stained with hematoxylin.
6. ICC staining gamma Synuclein in Hela cells (green). The nuclear counter stain is DAPI (blue). Cells were fixed in paraformaldehyde, permeabilised with 0.25% Triton X100/PBS.
7. Flow cytometric analysis of Hela cells with gamma Synuclein antibody at 1/100 dilution (red) compared with an unlabelled control (cells without incubation with primary antibody; black).





Application: FCM,ICC,IHC,IP,WB

Recommended WB: 1:500-2000; IHC: 1:50-200; ICC: 1:50-200; FCM: 1:50-100

Properties

Stability & Storage: Store at -20°C or -80°C for 12 months. Avoid repeated freeze-thaw cycles.

Shipping: Shipping with blue ice.

Antigen Details

Immunogen:	Recombinant Protein
Uniprot ID:	O76070
Synonyms:	Breast Cancer-Specific Gene 1 Protein;SR;Gamma-Synuclein;PERSYN;PRSN; γ -Synuclein;Synoretin;SNCG;BCSG1

Research Background

The synucleins, including α -synuclein (also designated NACP for nonamyloid component precursor), β -synuclein (also designated PNP 14 for phospho-neuroprotein 14) and γ -synuclein (also designated persyn or BCSG1 for breast cancer-specific gene 1) are presynaptic proteins abundant in neurons. Synucleins are predominantly expressed in the brain and are speculated to be involved in synaptic regulation and neuronal plasticity. α -Synuclein, identified as a component of Alzheimer's disease amyloid plaques, is localized to neuronal cell bodies and synapses. Coordinate expression of α -synuclein and β -synuclein may be important during hematopoietic cell differentiation. A mutant form of α -synuclein is found in patients with early onset Parkinson's disease. γ -Synuclein is associated with axonal pathology in Parkinson's disease.

Inhibitor · Natural Compounds · Compound Libraries · Recombinant Proteins

This product is for Research Use Only · Not for Human or Veterinary or Therapeutic Use

Tel:781-999-4286 E_mail:info@targetmol.com Address:34 Washington Street,Wellesley Hills,MA 02481