

Anti-gamma Sarcoglycan Antibody (3H334)

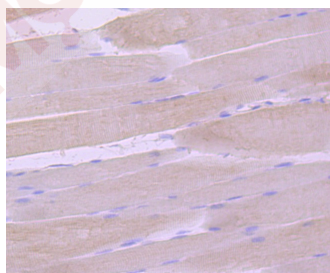
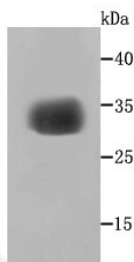
Product Details

Ig Type:	IgG
Reactivity:	Human,Mouse
Conjugation:	Unconjugated
Molecular Weight:	Theoretical: 32 kDa.
Clone:	3H334
Purification:	ProA affinity purified

Applications

Verified Activity:

1. Western blot analysis of gamma Sarcoglycan on human skeletal muscle cells lysates using anti-gamma Sarcoglycan antibody at 1/500 dilution.
2. Immunohistochemical analysis of paraffin-embedded mouse skeletal muscle tissue using anti-gamma Sarcoglycan antibody. Counter stained with hematoxylin.



Application:	IHC,IP,WB
Recommended	WB: 1:500-2000; IHC: 1:50-200; IP: 1:50-100

Properties

Stability & Storage:	Store at -20°C or -80°C for 12 months. Avoid repeated freeze-thaw cycles.
Shipping:	Shipping with blue ice.

Antigen Details

Immunogen:	Recombinant Protein
Uniprot ID:	Q13326
Synonyms:	Gamma-SG;DMDA;g Sarcoglycan;Gamma-sarcoglycan;35 kDa dystrophin-associated glycoprotein;gSarcoglycan;SCARMD2;LGMD2C;DMDA1;SGCG_HUMAN;SCG3;γSarcoglycan;35 kDa dystrophin associated glycoprotein;TYPE;γ Sarcoglycan;Gamma SG;35kDa dystrophin-associated glycoprotein;35kD dystrophin associated glycoprotein;A4;MGC130048;MAM;DAGA4;gammaSarcoglycan;SGCG;Sarcoglycan gamma;35DAG

Research Background

The sarcoglycan transmembrane proteins are members of the dystrophin complex. Sarcoglycans cluster together to form a complex, which is localized in the cell membrane of skeletal, cardiac and smooth muscle fibers. Four sarcoglycan subunit proteins, designated α -, β -, γ - and δ -sarcoglycan, form a complex on the skeletal muscle cell surface membrane. A genetic defect in any one of these proteins causes the loss or marked decrease of the whole sarcoglycan complex, which is observed in the autosomal recessive muscular dystrophy, sarcoglycanopathy. In smooth muscle, β - and δ -sarcoglycans are associated with ϵ -sarcoglycan, a glycoprotein homologous to α -sarcoglycan. Additionally, a complete deficiency in δ -sarcoglycan is the cause of the Syrian hamster BIO.14 cardiomyopathy.

Inhibitor · Natural Compounds · Compound Libraries · Recombinant Proteins

This product is for Research Use Only · Not for Human or Veterinary or Therapeutic Use

Tel:781-999-4286 E_mail:info@targetmol.com Address:34 Washington Street,Wellesley Hills,MA 02481