

Anti-LGALS8 Antibody (3D467)

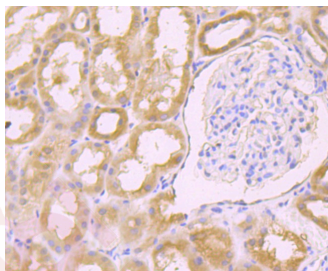
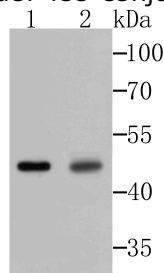
Product Details

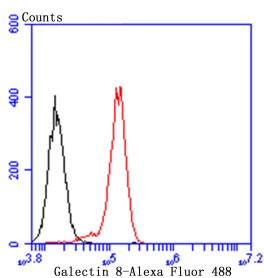
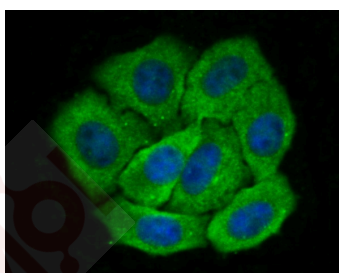
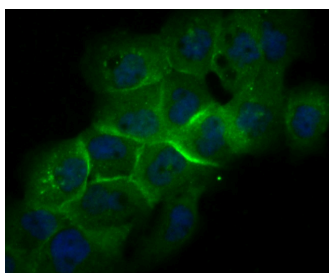
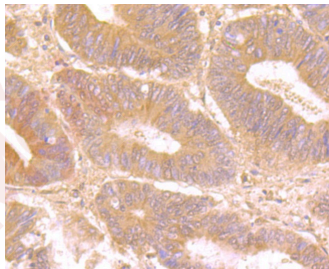
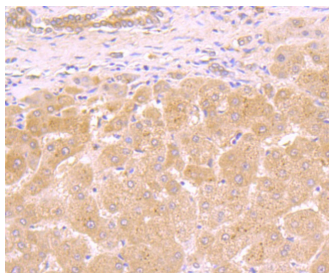
Ig Type:	IgG
Reactivity:	Human,Mouse,Rat
Conjugation:	Unconjugated
Molecular Weight:	Theoretical: 40 kDa.
Clone:	3D467
Purification:	ProA affinity purified

Applications

Verified Activity:

1. Western blot analysis of Galectin 8 on mouse testis and rat testis tissue lysates using anti-Galectin 8 antibody at 1/500 dilution.
2. Immunohistochemical analysis of paraffin-embedded human kidney tissue using anti-Galectin 8 antibody. Counter stained with hematoxylin.
3. Immunohistochemical analysis of paraffin-embedded human liver tissue using anti-Galectin 8 antibody. Counter stained with hematoxylin.
4. Immunohistochemical analysis of paraffin-embedded human colon cancer tissue using anti-Galectin 8 antibody. Counter stained with hematoxylin.
5. ICC staining Galectin 8 in A431 cells (green). The nuclear counter stain is DAPI (blue). Cells were fixed in paraformaldehyde, permeabilised with 0.25% Triton X100/PBS.
6. ICC staining Galectin 8 in HepG2 cells (green). The nuclear counter stain is DAPI (blue). Cells were fixed in paraformaldehyde, permeabilised with 0.25% Triton X100/PBS.
7. Flow cytometric analysis of PC-3M cells with Galectin 8 antibody at 1/100 dilution (red) compared with an unlabelled control (cells without incubation with primary antibody; black). Alexa Fluor 488-conjugated goat anti-rabbit IgG was used as the secondary antibody.





Application: FCM, ICC, IF, IHC, IP, WB

Recommended WB: 1:500-1000; IHC: 1:50-200; ICC: IF: 1:400-800; FCM: 1:50-100

Properties

Stability & Storage: Store at -20°C or -80°C for 12 months. Avoid repeated freeze-thaw cycles.

Shipping: Shipping with blue ice.

Antigen Details

Immunogen:	Recombinant Protein
Uniprot ID:	O00214
Synonyms:	Galectin-8;LGALS8;Prostate Carcinoma Tumor Antigen 1;Gal-8;PCTA-1;Po66-CBP;Po66 Carbohydrate-Binding Protein

Research Background

Several proteins have been identified as specific markers of prostate cancer, and they may be useful as diagnostic indicators. PSA, prostate specific antigen, is the classical indicator for transformed prostate tissue; however, in addition to being up-regulated in prostate cancer, PSA is also up-regulated in non-malignant conditions, such as benign prostatic hyperplasia prostate. Galectin-8, also known as prostate-specific membrane antigen (PCTA-1), is an additional prostate-specific antigen that is overexpressed only in malignant tumors and therefore is a more specific identifier of malignancies. It is a member of the galectin gene family which mediates both cell-cell and cell-matrix interactions in a manner similar to the selectin subgroup of C-type lectins.

Inhibitor · Natural Compounds · Compound Libraries · Recombinant Proteins

This product is for Research Use Only · Not for Human or Veterinary or Therapeutic Use

Tel:781-999-4286 E_mail:info@targetmol.com Address:34 Washington Street,Wellesley Hills,MA 02481