

## Anti-LGALS1 Antibody (2V443)

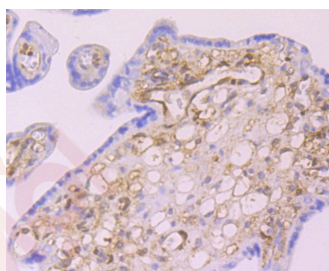
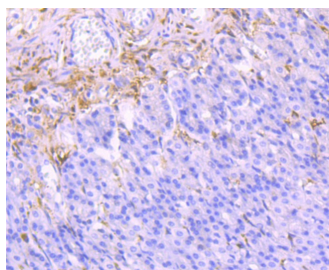
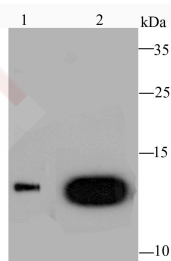
### Product Details

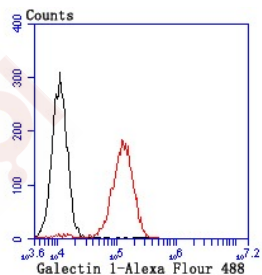
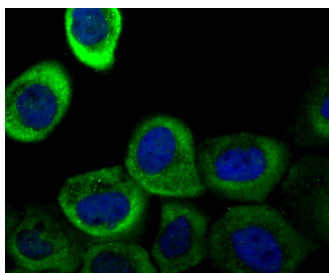
Ig Type:	IgG
Reactivity:	Human,Rat,Mouse
Conjugation:	Unconjugated
Clone:	2V443
Purification:	ProA affinity purified

### Applications

#### Verified Activity:

1. Western blot analysis of Galectin 1 on HL-60 cell (1) and human skeletal muscle tissue (2) lysate using anti-Galectin 1 antibody at 1/1,000 dilution.
2. Immunohistochemical analysis of paraffin-embedded rat stomach tissue using anti-Galectin 1 antibody. Counter stained with hematoxylin.
3. Immunohistochemical analysis of paraffin-embedded human placenta tissue using anti-Galectin 1 antibody. Counter stained with hematoxylin.
4. ICC staining Galectin 1 in A431 cells (green). The nuclear counter stain is DAPI (blue). Cells were fixed in paraformaldehyde, permeabilised with 0.25% Triton X100/PBS.
5. Flow cytometric analysis of NIH-3T3 cells with Galectin 1 antibody at 1/100 dilution (red) compared with an unlabelled control (cells without incubation with primary antibody; black).





Application: FCM,ICC/IF,IHC,IP,WB

Recommended WB: 1:500-1000; IHC: 1:400-800; ICC/IF: 1:50-200; IP: 1:10-50; FCM: 1:50-100

### Properties

Stability & Storage: Store at -20°C or -80°C for 12 months. Avoid repeated freeze-thaw cycles.

Shipping: Shipping with blue ice.

### Antigen Details

Immunogen: Recombinant Protein

Uniprot ID: P09382

Synonyms: LGALS1;GBP;HLBP14;DKFZp686E23103;GAL1;Galectin-1;S-Lac lectin 1;Galectin 1

### Research Background

Galectins are a family of soluble b-galactoside-binding animal lectins that modulate cell-to-cell adhesion and cell-to-extracellular matrix (ECM) interactions and play a role in tumor progression, pre-mRNA splicing and apoptosis. Specifically, Galectin-1 is an autocrine regulator of cell-proliferation that plays a role in the maintenance of G0 and in the control of G2 traverse. Galectin-1, also known as LGALS1, is the protein product of a single gene linked to human chromosome 22q13.1. The Galectin-1 protein contains 135 amino acids, a single internal EcoRI site and a polyadenylation signal. Galectin-1 can localize to both intracellular and extracellular space. Galectin-1 is expressed in human placenta, human lung, HL-6, HepG2 and CEM cells.

**Inhibitor · Natural Compounds · Compound Libraries · Recombinant Proteins**

This product is for Research Use Only · Not for Human or Veterinary or Therapeutic Use

Tel:781-999-4286 E\_mail:info@targetmol.com Address:34 Washington Street,Wellesley Hills,MA 02481