

## Anti-GABARAP Antibody (1D418)

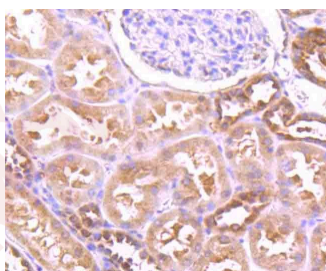
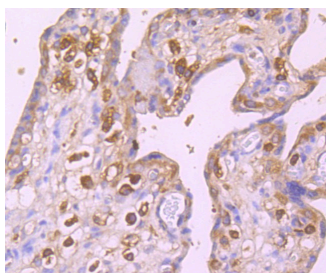
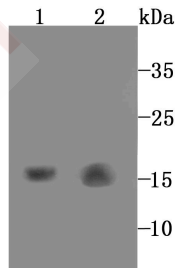
### Product Details

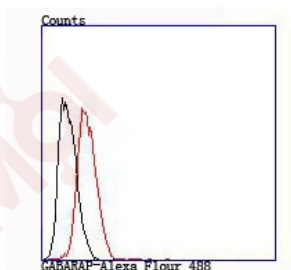
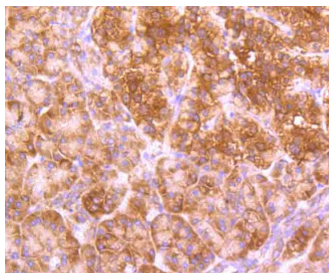
Ig Type:	IgG
Reactivity:	Human,Mouse,Rat
Conjugation:	Unconjugated
Molecular Weight:	Theoretical: 14 kDa.
Clone:	1D418
Purification:	ProA affinity purified

### Applications

#### Verified Activity:

1. Western blot analysis of GABARAP on mouse kidney (1) and rat liver (2) tissue lysate using anti-GABARAP antibody at 1/1,000 dilution.
2. Immunohistochemical analysis of paraffin-embedded human placenta tissue using anti-GABARAP antibody. Counter stained with hematoxylin.
3. Immunohistochemical analysis of paraffin-embedded human kidney tissue using anti-GABARAP antibody. Counter stained with hematoxylin.
4. Immunohistochemical analysis of paraffin-embedded human pancreas tissue using anti-GABARAP antibody. Counter stained with hematoxylin.
5. Flow cytometric analysis of Hela cells with GABARAP antibody at 1/100 dilution (red) compared with an unlabelled control (cells without incubation with primary antibody; black).





Application: FCM,IHC,WB  
Recommended WB: 1:500; IHC: 1:50-200; FCM: 1:50-100

### Properties

Stability & Storage: Store at -20°C or -80°C for 12 months. Avoid repeated freeze-thaw cycles.  
Shipping: Shipping with blue ice.

### Antigen Details

Immunogen: Recombinant Protein  
Uniprot ID: O95166  
Synonyms: GABARAP;GABARAP Protein;HCG1987397 Isoform CRA\_b;GABA(A) Receptor-Associated Protein

### Research Background

In the central nervous system GABA functions as the main inhibitory transmitter by increasing a Cl<sup>-</sup> conductance that inhibits neuronal firing. GABA has been shown to activate both ionotropic (GABAA) and metabotropic (GABAB) receptors as well as a third class of receptors called GABAC. In addition to GABA receptors, several proteins have been identified as regulators of GABA function, including GAD65, GAD67, GABA transporters and GABARAP (GABAA receptor-associated protein). GABARAP associates with GABAA Rg2 to link GABAA receptors to the cytoskeleton. The GABARAP protein sequence is similar to light chain-3 of microtubule-associated proteins (MAPs) suggesting that it may be a type of MAP or a component of a MAP complex.

**Inhibitor · Natural Compounds · Compound Libraries · Recombinant Proteins**

This product is for Research Use Only · Not for Human or Veterinary or Therapeutic Use

Tel:781-999-4286 E\_mail:info@targetmol.com Address:34 Washington Street,Wellesley Hills,MA 02481