

Anti-Phospho-GAB2 (Ser623) Polyclonal Antibody

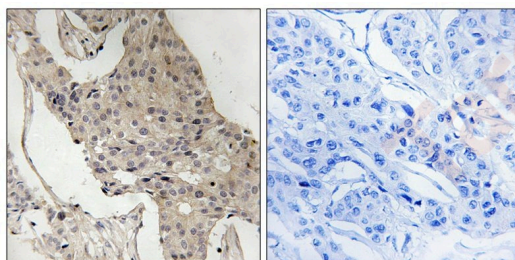
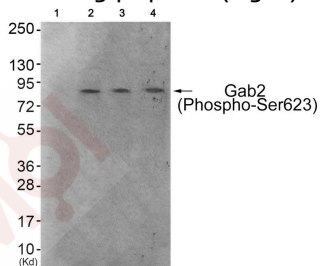
Product Details

Ig Type:	IgG
Reactivity:	Human,Mouse
Conjugation:	Unconjugated
Molecular Weight:	Actual: 80 kDa.
Purification:	Antibodies were produced by immunizing rabbits with synthetic phosphopeptide and KLH conjugates. Antibodies were purified by affinity-chromatography using epitope-specific phosphopeptide. Non-phospho specific antibodies were removed by chromatography using non-phosphopeptide.

Applications

Verified Activity:

- Western blot analysis of extracts from 293 cells (Lane 2), HeLa cells (Lane 3) and HepG2 cells (Lane 4), using Gab2 (Phospho-Ser623) Antibody TMAC-01585. The lane on the left is treated with antigen-specific peptide.
- Immunohistochemical analysis of paraffin-embedded human breast carcinoma tissue using Gab2 (Phospho-Ser623) antibody TMAC-01585 (left) or the same antibody preincubated with blocking peptide (right).



Application:	IHC,WB
Recommended	WB: 1:500-1000; IHC: 1:50-100

Properties

Stability & Storage:	Store at -20°C or -80°C for 12 months. Avoid repeated freeze-thaw cycles.
Shipping:	Shipping with blue ice.

Antigen Details

Immunogen:	Peptide sequence around phosphorylation site of Serine 623(P-S-S(p)-P-S) derived from Human Gab2
Antigen Species:	human
Uniprot ID:	Q9UQC2
Synonyms:	GAB2 (p-Ser623);p-GAB2 (Ser623);GAB2 (p-S623);p-GAB2 (S623)

Research Background

This gene is a member of the GRB2-associated binding protein (GAB) gene family and is similar to the GAB1 gene. These proteins contain pleckstrin homology (PH) domain, and bind SHP2 tyrosine phosphatase and GRB2 adapter protein. They act as adapters for transmitting various signals in response to stimuli through cytokine and growth factor receptors, and T- and B-cell antigen receptors. The protein encoded by this gene is the principal activator of phosphatidylinositol-3 kinase in response to activation of the high affinity IgE receptor. Two alternatively spliced transcripts encoding different isoforms have been described for this gene.

Inhibitor · Natural Compounds · Compound Libraries · Recombinant Proteins

This product is for Research Use Only · Not for Human or Veterinary or Therapeutic Use

Tel:781-999-4286 E_mail:info@targetmol.com Address:34 Washington Street,Wellesley Hills,MA 02481