

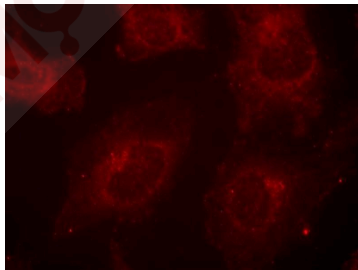
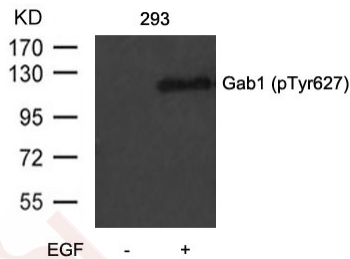
Anti-Phospho-GAB1 (Tyr627) Polyclonal Antibody

Product Details

Ig Type:	IgG
Reactivity:	Human,Mouse
Conjugation:	Unconjugated
Purification:	Antibodies were produced by immunizing rabbits with synthetic phosphopeptide and KLH conjugates. Antibodies were purified by affinity-chromatography using epitope-specific phosphopeptide. Non-phospho specific antibodies were removed by chromatography using non-phosphopeptide.

Applications

- Verified Activity:
- Western blot analysis of extracts from 293 cells untreated or treated with EGF using Gab1 (Phospho-Tyr627) Antibody TMAC-01583.
 - Immunofluorescence staining of methanol-fixed Hela cells using Gab1 (Phospho-Tyr627) Antibody TMAC-01583.



Application: IF, WB

Properties

Stability & Storage:	Store at 2°C-8°C for 1 month. Store at -20°C or -80°C for 12 months. Avoid repeated freeze-thaw cycles.
Shipping:	Shipping with blue ice.

Antigen Details

Immunogen:	Peptide sequence around phosphorylation site of tyrosine 627 (V-E-Y(p)-L-D) derived from Human Gab1
Antigen Species:	human
Uniprot ID:	Q13480
Synonyms:	p-GAB1 (Tyr627);GAB1 (p-Tyr627);p-GAB1 (Y627);GAB1 (p-Y627)

Research Background

The protein encoded by Gab1 is a member of the IRS1-like multisubstrate docking protein family. It is an important mediator of branching tubulogenesis and plays a central role in cellular growth response, transformation and apoptosis. Two transcript variants encoding different isoforms have been found for this gene.

Inhibitor · Natural Compounds · Compound Libraries · Recombinant Proteins

This product is for Research Use Only · Not for Human or Veterinary or Therapeutic Use

Tel:781-999-4286 E_mail:info@targetmol.com Address:34 Washington Street,Wellesley Hills,MA 02481