

## Anti-GAB1 Antibody (4I330)

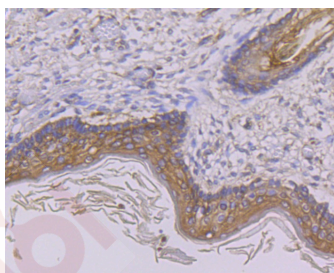
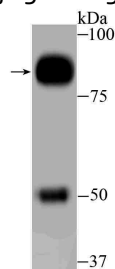
### Product Details

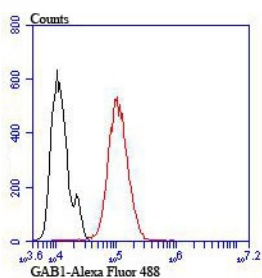
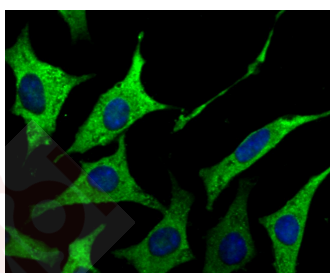
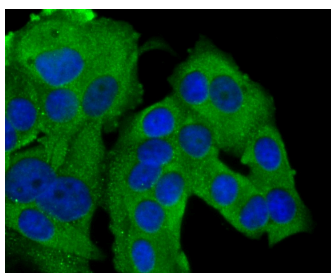
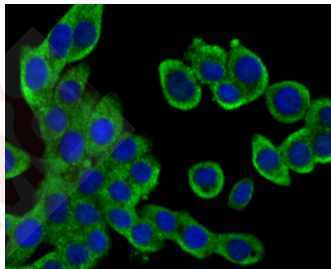
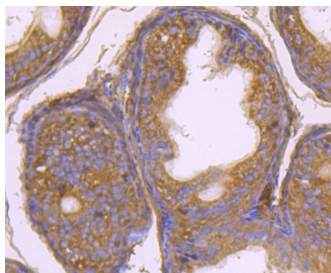
Ig Type:	IgG
Reactivity:	Human,Mouse,Rat
Conjugation:	Unconjugated
Molecular Weight:	Theoretical: 77 kDa.
Clone:	4I330
Purification:	ProA affinity purified

### Applications

#### Verified Activity:

1. Western blot analysis of GAB1 on human small intestine tissue lysate using anti-GAB1 antibody at 1/500 dilution.
2. Immunohistochemical analysis of paraffin-embedded human skin tissue using anti-GAB1 antibody. Counter stained with hematoxylin.
3. Immunohistochemical analysis of paraffin-embedded rat epididymis tissue using anti-GAB1 antibody. Counter stained with hematoxylin.
4. ICC staining GAB1 in LOVO cells (green). The nuclear counter stain is DAPI (blue). Cells were fixed in paraformaldehyde, permeabilised with 0.25% Triton X100/PBS.
5. ICC staining GAB1 in MCF-7 cells (green). The nuclear counter stain is DAPI (blue). Cells were fixed in paraformaldehyde, permeabilised with 0.25% Triton X100/PBS.
6. ICC staining GAB1 in SH-SY5Y cells (green). The nuclear counter stain is DAPI (blue). Cells were fixed in paraformaldehyde, permeabilised with 0.25% Triton X100/PBS.
7. Flow cytometric analysis of Hela cells with GAB1 antibody at 1/100 dilution (red) compared with an unlabelled control (cells without incubation with primary antibody; black). Alexa Fluor 488-conjugated goat anti-rabbit IgG was used as the secondary antibody.





Application: FCM, ICC, IF, IHC, WB

Recommended WB: 1:500-2000; IHC: 1:50-200; ICC: 1:100-500; FCM: 1:50-100

### Properties

Stability & Storage: Store at -20°C or -80°C for 12 months. Avoid repeated freeze-thaw cycles.

Shipping: Shipping with blue ice.

### Antigen Details

Immunogen:	Recombinant Protein
Uniprot ID:	Q13480
Synonyms:	Gab 1;GAB1;GRB2 associated binding protein 1 isoform a;GRB 2 associated binder 1;GRB2-associated binder 1;GAB1_HUMAN;GRB2-associated-binding protein 1;GRB 2 associated binding protein 1;Growth factor receptor bound protein 2-associated protein 1;GRB2 associated binding protein 1 isoform b

---

### Research Background

Growth factor triggering of protein tyrosine kinase receptors induces signals that cascade to the nucleus, activating mitogenic as well as other responses. Critical components of this process include adapter proteins such as Shc, IRS-1 and Gab 1 (GRB-associated binder-1) that lack detectable catalytic activity. These are immediate substrates of receptor tyrosine kinase activity and serve to link activated receptors to downstream signaling components. Whereas Shc has been implicated in signaling by diverse receptor families, IRS-1 serves primarily as the major insulin receptor substrate. Shc and Gab 1 also participate in insulin signaling by linking the insulin receptor to Ras by forming complexes with GRB2 (another adapter protein) and Sos independently of IRS-1. Gab 1 is also thought to be involved in the EGF receptor signaling pathway.

**Inhibitor · Natural Compounds · Compound Libraries · Recombinant Proteins**

This product is for Research Use Only · Not for Human or Veterinary or Therapeutic Use

Tel:781-999-4286 E\_mail:info@targetmol.com Address:34 Washington Street,Wellesley Hills,MA 02481