

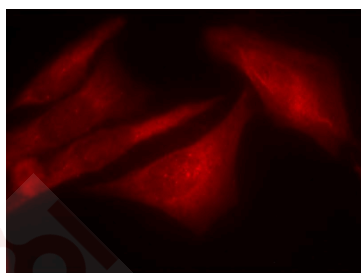
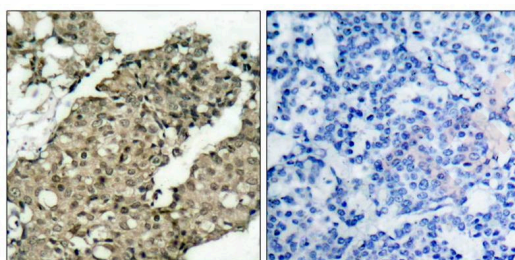
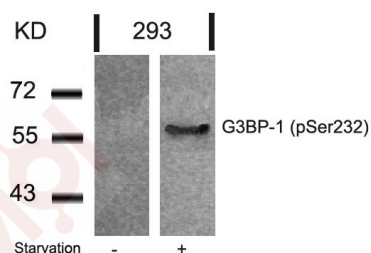
## Anti-Phospho-G3BP1 (Ser232) Polyclonal Antibody

### Product Details

|               |  |
|---------------|--|
| Ig Type:      | IgG  |
| Reactivity:   | Human  |
| Conjugation:  | Unconjugated   |
| Purification: | Antibodies were produced by immunizing rabbits with synthetic phosphopeptide and KLH conjugates. Antibodies were purified by affinity-chromatography using epitope-specific phosphopeptide. Non-phospho specific antibodies were removed by chromatography using non-phosphopeptide. |

### Applications

- Verified Activity:
- Western blot analysis of extracts from 293 cells untreated or treated with starvation using G3BP-1 (Phospho-Ser232) Antibody TMAC-01579.
  - Immunohistochemical analysis of paraffin-embedded human breast carcinoma tissue using G3BP-1 (Phospho-Ser232) Antibody TMAC-01579(left) or the same antibody preincubated with blocking peptide (right).
  - Immunofluorescence staining of methanol-fixed Hela cells using G3BP-1 (Phospho-Ser232) Antibody TMAC-01579.



Application: IF,IHC,WB

## A DRUG SCREENING EXPERT

---

### Properties

**Stability & Storage:** Store at 2°C-8°C for 1 month. Store at -20°C or -80°C for 12 months. Avoid repeated freeze-thaw cycles.

**Shipping:** Shipping with blue ice.

---

### Antigen Details

**Immunogen:** Peptide sequence around phosphorylation site of serine 232 (S-S-S(p)-P-A) derived from Human G3BP-1

**Antigen Species:** human

**Uniprot ID:** Q13283

**Synonyms:** G3BP1 (p-S232);G3BP1 (p-Ser232);p-G3BP1 (Ser232);p-G3BP1 (S232)

---

### Research Background

May be a regulated effector of stress granule assembly. Phosphorylation-dependent sequence-specific endoribonuclease in vitro. Cleaves exclusively between cytosine and adenine and cleaves MYC mRNA preferentially at the 3'-UTR. ATP- and magnesium-dependent helicase. Unwinds preferentially partial DNA and RNA duplexes having a 17 bp annealed portion and either a hanging 3' tail or hanging tails at both 5'- and 3'-ends. Unwinds DNA/DNA, RNA/DNA, and RNA/RNA substrates with comparable efficiency. Acts unidirectionally by moving in the 5' to 3' direction along the bound single-stranded DNA.

**Inhibitor · Natural Compounds · Compound Libraries · Recombinant Proteins**

This product is for Research Use Only · Not for Human or Veterinary or Therapeutic Use

Tel:781-999-4286 E\_mail:info@targetmol.com Address:34 Washington Street,Wellesley Hills,MA 02481