

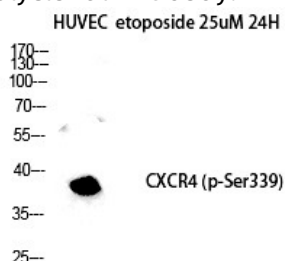
## Anti-Phospho-CXCR4 (Ser339) Polyclonal Antibody

## Product Details

Ig Type:	IgG
Reactivity:	Human,Mouse,Rat,Monkey
Conjugation:	Unconjugated
Molecular Weight:	Actual: 38 kDa.
Purification:	The antibody was affinity-purified from rabbit antiserum by affinity-chromatography using epitope-specific immunogen.

## Applications

Verified Activity: 1. Western Blot analysis of HuvEc etoposide 25uM 24H cells using Phospho-Fusin (S339) Polyclonal Antibody.



Application:	ELISA,IF,IHC,WB
Recommended	WB: 1:500-2000; IHC: 1:100-300; IF: 1:200-1000; ELISA: 1:20000

## Properties

Stability & Storage:	Store at -20°C or -80°C for 12 months. Avoid repeated freeze-thaw cycles.
Shipping:	Shipping with blue ice.

## Antigen Details

Immunogen:	A synthesized phosphopeptide: human Fusin around the phosphorylation site of S339
Antigen Species:	human
Uniprot ID:	P61073
Synonyms:	CXCR4 (p-S339);p-CXCR4 (S339);CXCR4 (p-Ser339);p-CXCR4 (Ser339)

**Inhibitor · Natural Compounds · Compound Libraries · Recombinant Proteins**

This product is for Research Use Only. Not for Human or Veterinary or Therapeutic Use

Tel:781-999-4286 E\_mail:info@targetmol.com Address:34 Washington Street,Wellesley Hills,MA 02481