

Anti-FURIN Antibody (5P939)

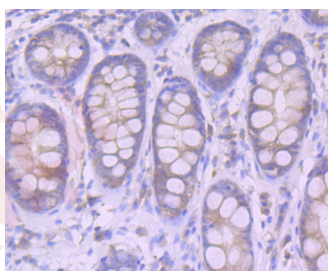
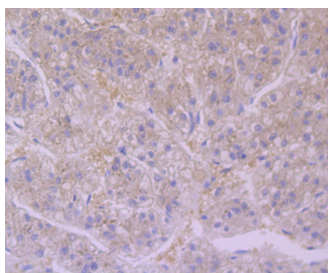
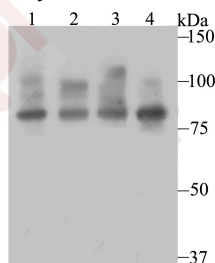
Product Details

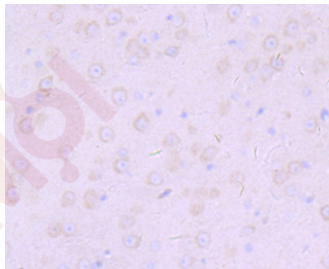
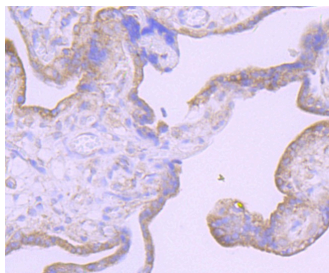
Ig Type:	IgG
Reactivity:	Human,Mouse,Rat
Conjugation:	Unconjugated
Molecular Weight:	Theoretical: 87 kDa.
Clone:	5P939
Purification:	ProA affinity purified

Applications

Verified Activity:

1. Western blot analysis of Furin on different cell lysates using anti-Furin antibody at 1/500 dilution. Positive control: Lane 1: HepG2, Lane 2: HeLa, Lane 3: HeLa, Lane 4: MCF-7.
2. Immunohistochemical analysis of paraffin-embedded human liver tissue using anti-Furin antibody. Counter stained with hematoxylin.
3. Immunohistochemical analysis of paraffin-embedded human colon tissue using anti-Furin antibody. Counter stained with hematoxylin.
4. Immunohistochemical analysis of paraffin-embedded human placenta tissue using anti-Furin antibody. Counter stained with hematoxylin.
5. Immunohistochemical analysis of paraffin-embedded mouse brain tissue using anti-Furin antibody. Counter stained with hematoxylin.





Application: ICC,IHC,WB
Recommended WB: 1:500-1000; IHC: 1:50; ICC: 1:50-100

Properties

Stability & Storage: Store at -20°C or -80°C for 12 months. Avoid repeated freeze-thaw cycles.
Shipping: Shipping with blue ice.

Antigen Details

Immunogen: Recombinant Protein: human Furin aa 200-400
Antigen Species: human
Uniprot ID: P09958
Synonyms: FURIN;PACE;Paired basic amino acid residue-cleaving enzyme;PCSK3;FUR;Dibasic-processing enzyme

Research Background

Furin (FUR, PACE, PCSK3, SPC1, Kex2p) is a calcium-dependent serine endoprotease that belongs to the subtilisin-like proprotein convertase family. The members of this family process latent precursor proteins into their biologically active products. Furin cleaves at paired basic amino acid processing sites within parathyroid hormone, transforming growth factor beta 1 precursor, proalbumin, pro-beta-secretase, membrane type-1 matrix metalloproteinase, beta subunit of pro-nerve growth factor and von Willebrand factor. Furin can directly cleave proMMP-2 within the trans-Golgi network leading to an inactive form of matrix metalloproteinase-2 (MMP-2). Furin is synthesized as an inactive zymogen that may minimize the occurrence of premature enzymatic activity that would lead to alternative protein activation or degradation. The inhibitory mechanism is based on the presence of an inactivating prosegment at the NH2 terminal of the Furin. After initial autocatalytic cleavage, the prosegment remains tightly associated until it reaches the trans-Golgi network where the dissociation of the prosegment and activation of furin occurs.

Inhibitor · Natural Compounds · Compound Libraries · Recombinant Proteins

This product is for Research Use Only · Not for Human or Veterinary or Therapeutic Use

Tel:781-999-4286 E_mail:info@targetmol.com Address:34 Washington Street,Wellesley Hills,MA 02481