

## Anti-FTO Antibody (6A98)

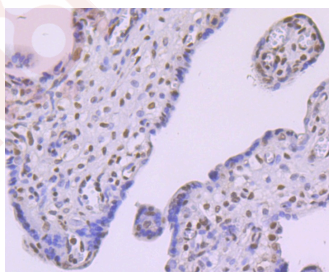
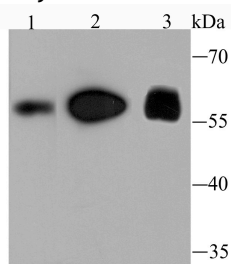
### Product Details

Ig Type:	IgG
Reactivity:	Human
Conjugation:	Unconjugated
Clone:	6A98
Purification:	ProA affinity purified

### Applications

#### Verified Activity:

1. Western blot analysis of FTO on different lysates using anti-FTO antibody at 1/1,000 dilution. Positive control: Lane 1: Human fetal brain tissue, Lane 2: HepG2, Lane 3: 293.
2. Immunohistochemical analysis of paraffin-embedded human pancreas tissue using anti-FTO antibody. Counter stained with hematoxylin.



Application:	ICC/IF,IHC,WB
Recommended	WB: 1:500-2000; IHC: 1:50-200; ICC/IF: 1:50-200

### Properties

Stability & Storage:	Store at -20°C or -80°C for 12 months. Avoid repeated freeze-thaw cycles.
Shipping:	Shipping with blue ice.

### Antigen Details

Immunogen: Recombinant Protein

Uniprot ID: Q9C0B1

---

### Research Background

FTO, also known as Fatso or KIAA1752, is a 505 amino acid protein that has an N-terminal nuclear localization signal. Expressed in a variety of tissues, with highest levels present in brain and pancreatic tissue, Fatso exists as four alternatively spliced isoforms, one of which is associated with a predisposition to childhood and adult obesity. Due to its involvement in the development of obesity, Fatso is associated with an increased BMI and may be involved in the pathogenesis of type 2 diabetes. The gene encoding Fatso maps to human chromosome 16, which encodes over 900 genes and comprises nearly 3% of the human genome. The GAN gene is located on chromosome 16 and, with mutation, may lead to giant axonal neuropathy, a nervous system disorder characterized by increasing malfunction with growth. The rare disorder Rubinstein-Taybi syndrome is also associated with chromosome 16, as is Crohn's disease, which is a gastrointestinal inflammatory condition.

**Inhibitor · Natural Compounds · Compound Libraries · Recombinant Proteins**

**This product is for Research Use Only · Not for Human or Veterinary or Therapeutic Use**

Tel: 781-999-4286 E\_mail: info@targetmol.com Address: 34 Washington Street, Wellesley Hills, MA 02481