

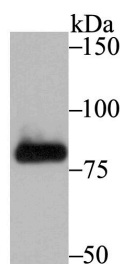
Anti-PFKM Antibody (4A746)

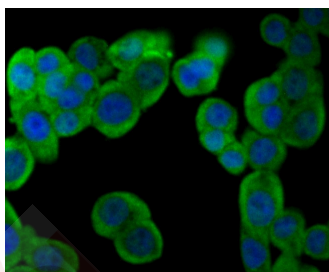
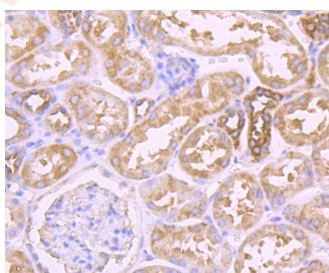
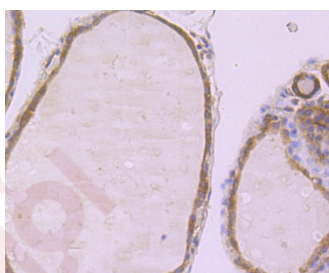
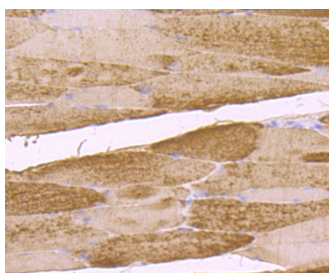
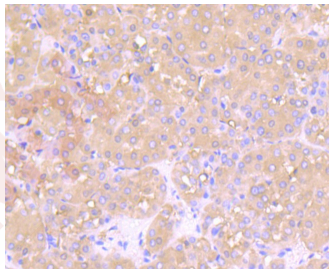
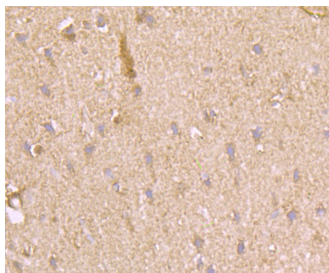
Product Details

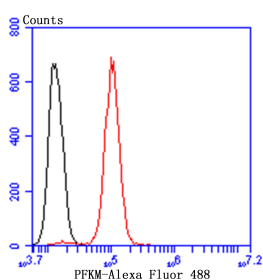
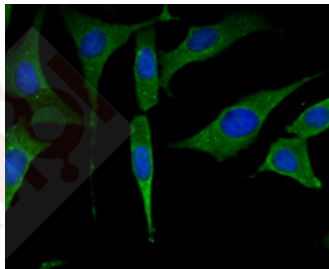
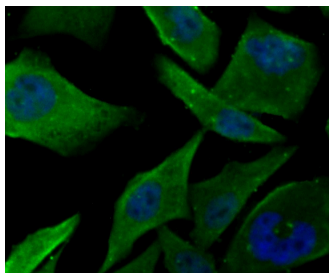
Ig Type:	IgG
Reactivity:	Human,Mouse,Rat
Conjugation:	Unconjugated
Molecular Weight:	Theoretical: 85 kDa.
Clone:	4A746
Purification:	ProA affinity purified

Applications

1. Western blot analysis of Fructose 6 Phosphate Kinase on PC-3M cell lysate using anti-Fructose 6 Phosphate Kinase antibody at 1/500 dilution.
2. Immunohistochemical analysis of paraffin-embedded rat brain tissue using anti-Fructose 6 Phosphate Kinase antibody. Counter stained with hematoxylin.
3. Immunohistochemical analysis of paraffin-embedded human liver cancer tissue using anti-Fructose 6 Phosphate Kinase antibody. Counter stained with hematoxylin.
4. Immunohistochemical analysis of paraffin-embedded mouse skeletal muscle tissue using anti-Fructose 6 Phosphate Kinase antibody. Counter stained with hematoxylin.
5. Immunohistochemical analysis of paraffin-embedded human thyroid gland tissue using anti-Fructose 6 Phosphate Kinase antibody. Counter stained with hematoxylin.
6. Immunohistochemical analysis of paraffin-embedded human kidney tissue using anti-Fructose 6 Phosphate Kinase antibody. Counter stained with hematoxylin.
7. ICC staining Fructose 6 Phosphate Kinase in LOVO cells (green). The nuclear counter stain is DAPI (blue). Cells were fixed in paraformaldehyde, permeabilised with 0.25% Triton X100/PBS.
8. ICC staining Fructose 6 Phosphate Kinase in PC-3M cells (green). The nuclear counter stain is DAPI (blue). Cells were fixed in paraformaldehyde, permeabilised with 0.25% Triton X100/PBS.
9. ICC staining Fructose 6 Phosphate Kinase in SH-SY-5Y cells (green). The nuclear counter stain is DAPI (blue). Cells were fixed in paraformaldehyde, permeabilised with 0.25% Triton X100/PBS.
10. Flow cytometric analysis of SH-SY-5Y cells with Fructose 6 Phosphate Kinase antibody at 1/100 dilution (red) compared with an unlabelled control (cells without incubation with primary antibody; black). Alexa Fluor 488-conjugated goat anti-rabbit IgG was used as the secondary antibody.







Application: FCM, ICC, IF, IHC, WB

Recommended WB: 1:500-1000; IHC: 1:50-200; ICC: 1:50-200; FCM: 1:50-100

Properties

Stability & Storage: Store at -20°C or -80°C for 12 months. Avoid repeated freeze-thaw cycles.

Shipping: Shipping with blue ice.

Antigen Details

Immunogen: Recombinant Protein

Uniprot ID: P08237

Synonyms: Phosphofructo-1-kinase isozyme A; 6-phosphofructokinase, muscle type; Phosphofructokinase 1; Phosphohexokinase; PFKM; PFKX

Research Background

Catalyzes the phosphorylation of D-fructose 6-phosphate to fructose 1,6-bisphosphate by ATP, the first committing step of glycolysis. In human PFK exists as a system of 3 types of subunits, PFKM (muscle), PFKL (liver) and PFKP (platelet) isoenzymes.

Inhibitor · Natural Compounds · Compound Libraries · Recombinant Proteins

This product is for Research Use Only · Not for Human or Veterinary or Therapeutic Use

Tel: 781-999-4286 E_mail: info@targetmol.com Address: 34 Washington Street, Wellesley Hills, MA 02481