

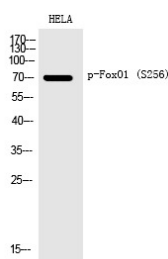
Anti-Phospho-FOXO1 (Ser256) Polyclonal Antibody 2

Product Details

Ig Type:	IgG
Reactivity:	Human,Mouse,Rat
Conjugation:	Unconjugated
Molecular Weight:	Actual: 70 kDa.
Purification:	The antibody was affinity-purified from rabbit antiserum by affinity-chromatography using epitope-specific immunogen.

Applications

Verified Activity: 1. Western Blot analysis of HELA cells using Phospho-FoxO1 (S256) Polyclonal Antibody.



Application: ELISA,IF,IHC,WB

Recommended WB: 1:500-2000; IHC: 1:100-300; IF: 1:200-1000; ELISA: 1:20000

Properties

Stability & Storage: Store at -20°C or -80°C for 12 months. Avoid repeated freeze-thaw cycles.

Shipping: Shipping with blue ice.

Antigen Details

Immunogen:	A synthesized phosphopeptide: human FoxO1 around the phosphorylation site of S256
Antigen Species:	human
Uniprot ID:	Q12778
Synonyms:	p-FOXO1 (Ser256);p-FOXO1 (S256);FOXO1 (p-S256);FOXO1 (p-Ser256)

Inhibitor · Natural Compounds · Compound Libraries · Recombinant Proteins

This product is for Research Use Only. Not for Human or Veterinary or Therapeutic Use

Tel:781-999-4286 E_mail:info@targetmol.com Address:34 Washington Street,Wellesley Hills,MA 02481