

Anti-FOXF2 Antibody (8Y605)

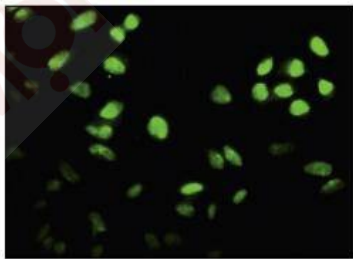
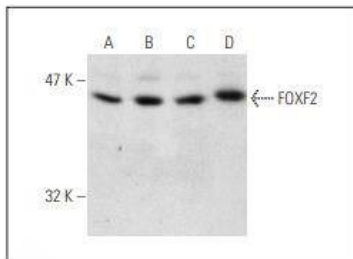
Product Details

Reactivity:	Human, Mouse
Conjugation:	Unconjugated
Molecular Weight:	Theoretical: 40 kDa.
Clone:	8Y605
Purification:	ProA affinity purified

Applications

Verified Activity:

1. Western blot analysis of FOXF2 expression in HepG2 (A), HeLa (B), A549 (C) and THP-1 (D) nuclear extracts.
2. Immunofluorescence staining of paraformaldehyde-fixed HeLa cells showing nuclear localization.



Application: IF, IP, WB

Recommended WB: 1:100-1000; IP: 1-2 µg per 100-500 µg of total protein (1 ml of cell lysate) IF: 1:50-500

Properties

Stability & Storage: Store at -20°C or -80°C for 12 months. Avoid repeated freeze-thaw cycles.

Shipping: Shipping with blue ice.

Antigen Details

Immunogen:	Recombinant Protein: human FOXF2
Antigen Species:	human
Uniprot ID:	Q12947
Synonyms:	Forkhead box protein F2;FREAC2;Forkhead related protein FKHL6;Forkhead related activator 2; Forkhead, Drosophila, homolog-like 6;FOXF 2;Forkhead box F2;Forkhead related transcription factor 2;FKHL6;FKHL 6;FREAC 2;FKH L6;Forkhead like 6;FOX F2;OTTHUMP00000017863

Research Background

The FOX family of transcription factors share a common DNA binding domain termed a winged-helix or forkhead domain. Many FOX proteins play important roles in development, metabolism, cancer and aging. Development of the vertebrate gut is controlled by paracrine crosstalk between the endodermal epithelium and the associated splanchnic mesoderm. FOXF2 (forkhead box F2), also known as FKHL or FREAC2, is expressed in lung and placenta, and has been shown to transcriptionally activate several lung-specific genes. FOXF2 interacts with transcription factors TFIIB and TBP, and may be involved in regulating transcription in embryogenesis and pattern formation in multicellular organisms. FOXF2-deficient mice develop cleft palate and an abnormal tongue, which suggests that FOXF2 may be critical for palatogenesis.

Inhibitor · Natural Compounds · Compound Libraries · Recombinant Proteins

This product is for Research Use Only · Not for Human or Veterinary or Therapeutic Use

Tel:781-999-4286 E_mail:info@targetmol.com Address:34 Washington Street,Wellesley Hills,MA 02481